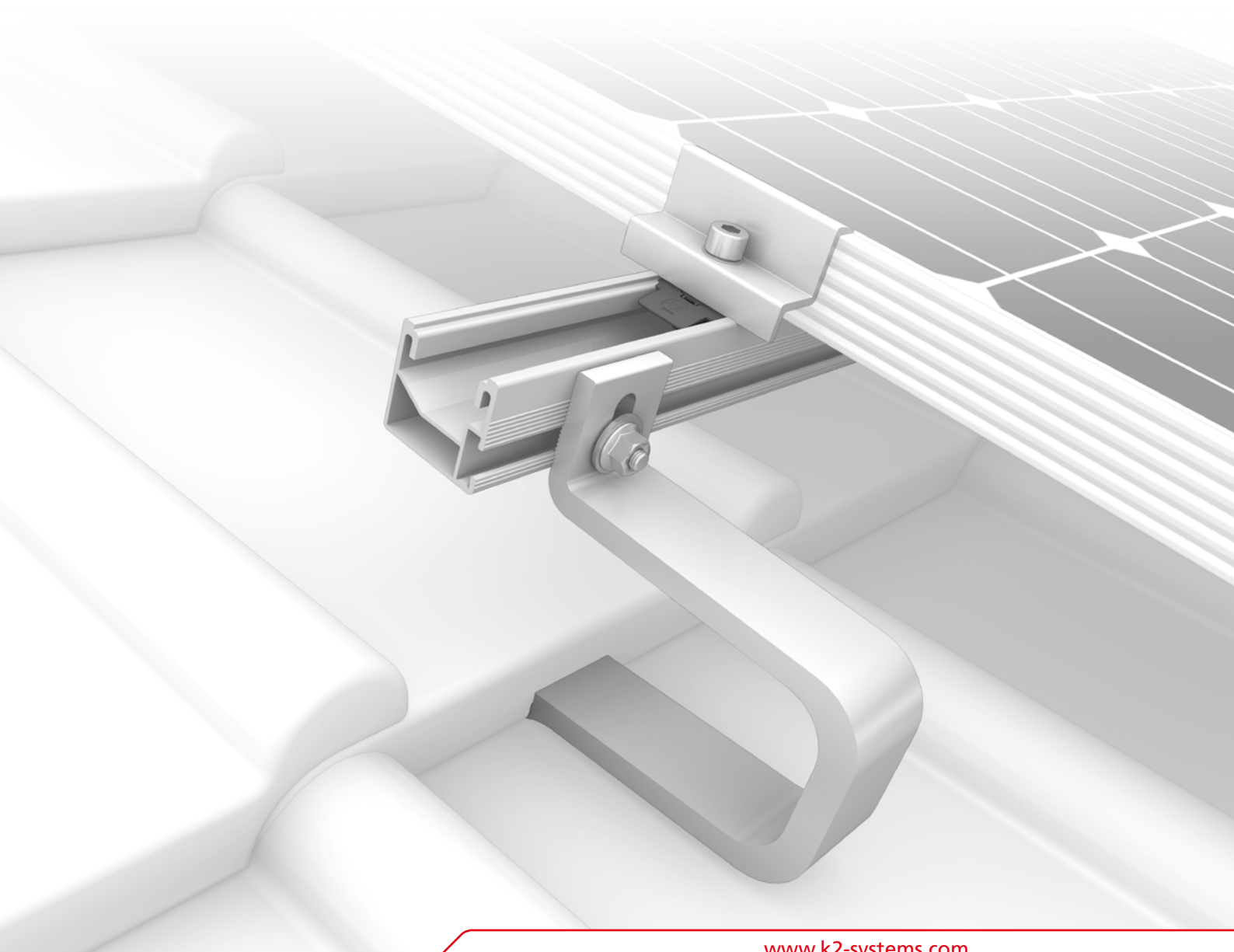
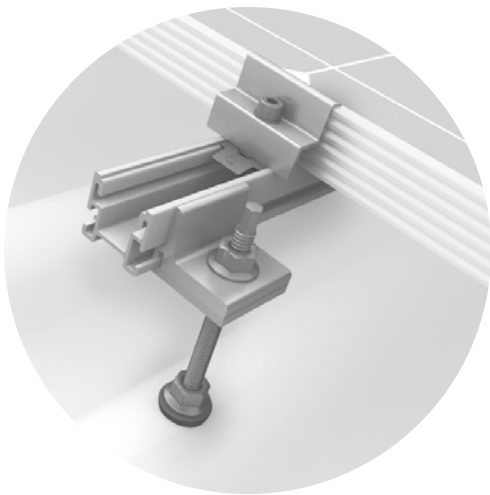
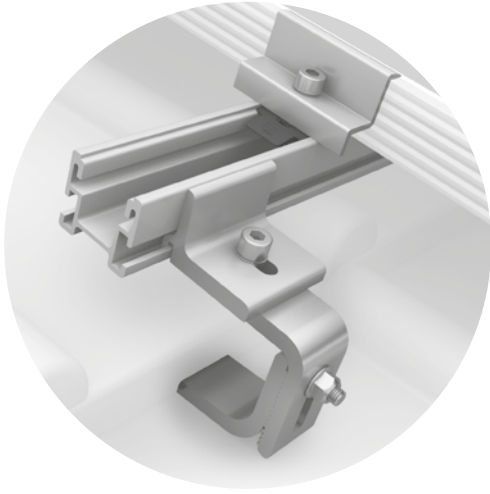


PITCHED ROOF SYSTEMS





Content



		Pantiles	Plain tile	Slate	Trapezoidal sheet metal	Sandwich panel	Corrugated sheet metal	Corrugated fibre cement	Standing seam roof
▶ SingleRail System	4	●	○	○	○	○	○	●	●
▶ CrossRail System	6	●	○	○	○	○	○	●	●
▶ SolidRail System	8	●	●	●	●	○	○	●	●
▶ MiniRail System	10	○	○	○	●	●	○	○	○
▶ SpeedRail System	12	○	○	○	●	●	○	○	○
▶ MultiRail System	14	○	○	○	●	●	○	○	○
▶ S-Dome Small System	16	○	○	○	●	○	○	○	○
▶ ClampRail System	18	○	○	○	○	○	○	○	●
▶ Overview of roof fastenings	20								
▶ Accessories	24								
▶ Notes	30								

● Suitable ○ Unsuitable

WARRANTY

We offer a 12-year warranty on all K2 system components.
k2-systems.com/en/guarantee

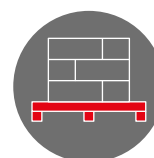


STATICS AND DESIGN LOADS

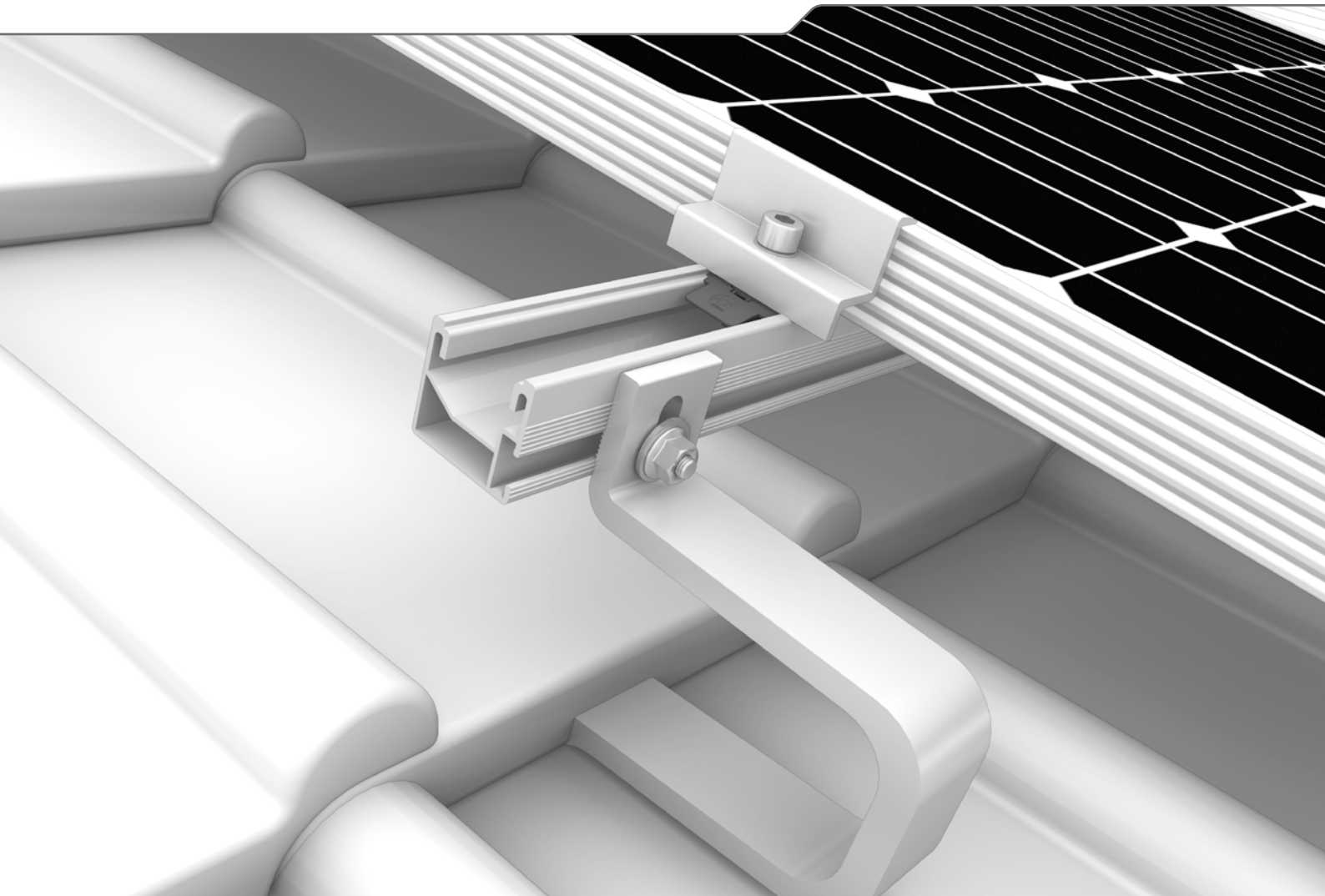
K2 mounting systems fulfil the calculation principles in accordance with Eurocode 1 and 9.

PALLET DELIVERY

Many mounting systems are delivered in pallets to save space and costs.



SingleRail System



- ▶ Quick and low-cost with direct lateral connections to the rail without additional components including customised height adjustment
- ▶ Secure snap-in assembly – without needing to be screwed into the base plate
- ▶ The SingleRail in combination with CrossHook roof hooks, forms a powerful and multi-talented team



ROOF FASTENINGS: HANGER BOLTS AND ROOF HOOKS



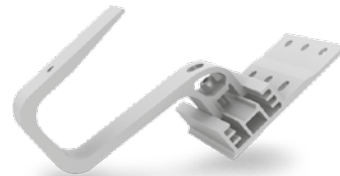
Hanger bolts, CR

- ▶ For corrugated fibre cement roofing with wooden substructures
- ▶ With building approval



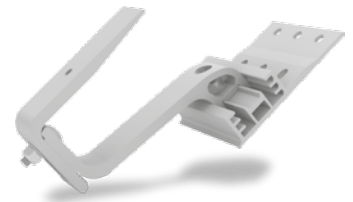
SingleHook 1.1

- ▶ Easy height adjustment with slotted bore hole
- ▶ Also suitable for narrow rafters
- ▶ Connects directly to SingleRail



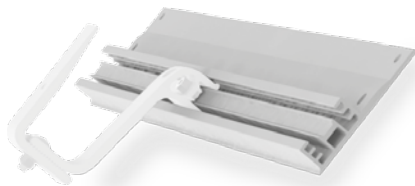
CrossHook 3S

- ▶ 3 height adjustments in the base plate
- ▶ Also suitable for narrow rafters



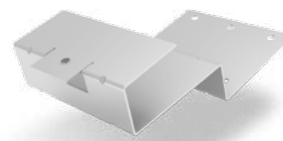
CrossHook 4S

- ▶ 3 height adjustments in the base plate
- ▶ Further height adjustment at the bracket itself.
- ▶ Also suitable for narrow rafters



CrossBoard

- ▶ The easy solution for noggining, skylights etc.
- ▶ Complements CrossHook 3S and 4S



CrossHook 2

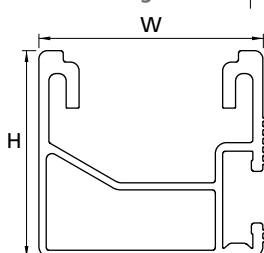
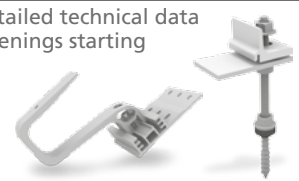
- ▶ For concrete flat tiles/slate
- ▶ With round-slotted bore holes

TECHNICAL DATA

	SingleRail 36	SingleRail 50	SingleRail 63
Figure			
Material	Aluminium (EN AW-6063 T66)		
W = width [mm]	39.4	39	47
H = height [mm]	36	50	63
Lengths [m]	2.10/3.15/4.15/6.10	6.10	6.10
Weight [kg/m]	0.76	1.0	1.51
Cross-bracing with	CrossRail, SingleRail, SolidRail, SpeedRail and MultiRail		

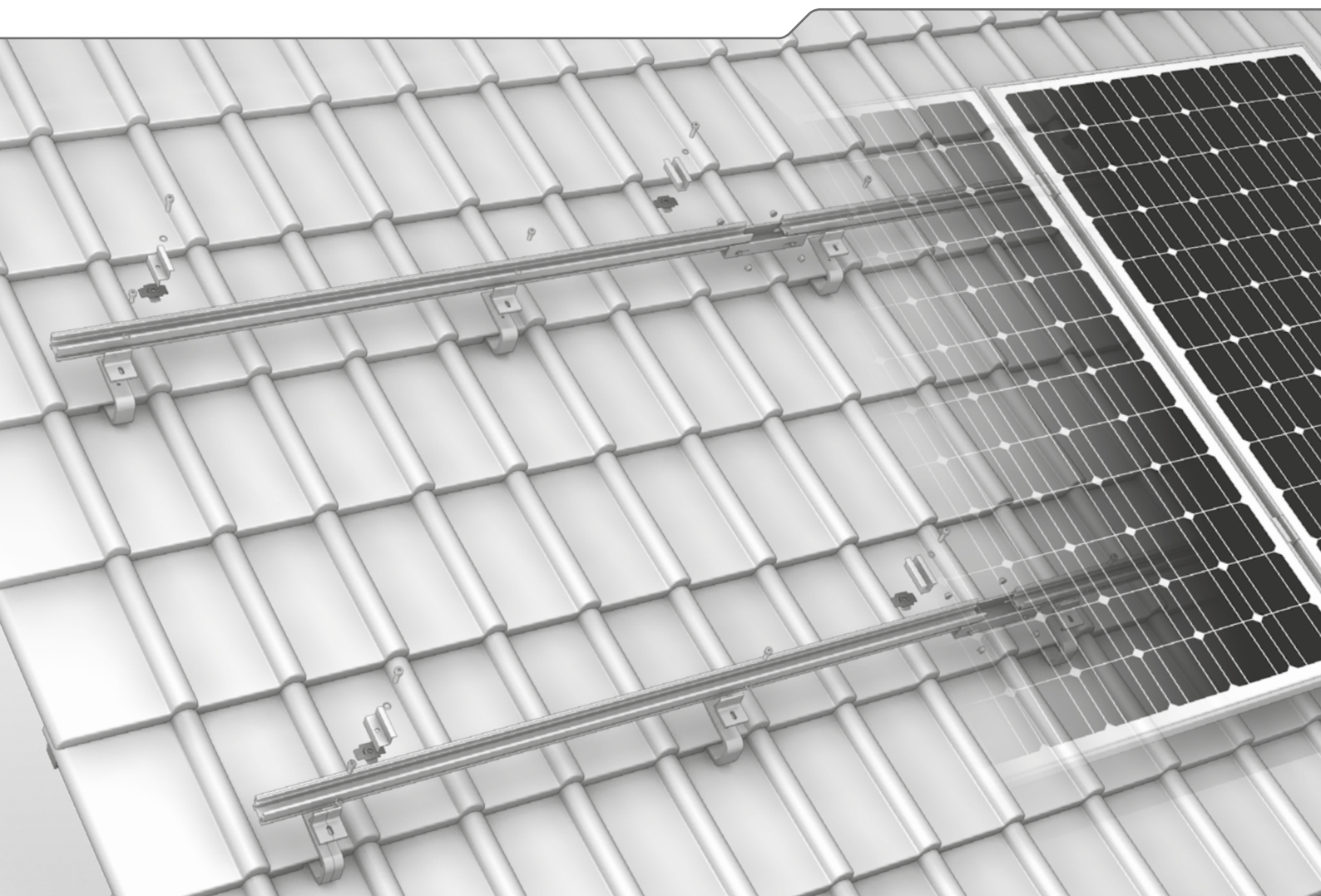
Roof fastenings

You will find detailed technical data on our roof fastenings starting on page 20.



For heavy loads and large spans!

CrossRail System



- ▶ Sophisticated geometric design and optimal use of materials – for large rail widths
- ▶ Highest corrosion resistance thanks to roof hooks and rails made of aluminium
- ▶ Clever and strong: 3 height adjustments in the 3S model and further bracket adjustment in the 4S models

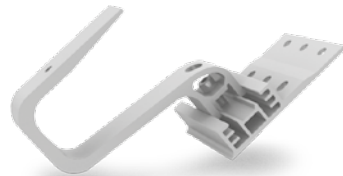


ROOF FASTENINGS: HANGER BOLTS AND ROOF HOOKS



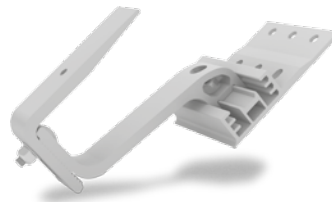
Hanger bolts, CR

- ▶ For corrugated fibre cement roofing with wooden substructures
- ▶ With building approval



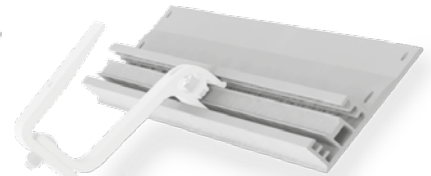
CrossHook 3S

- ▶ 3 height adjustments in the base plate
- ▶ Also suitable for narrow rafters



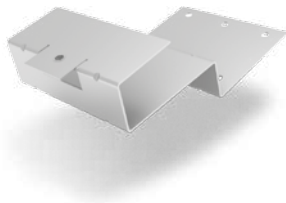
CrossHook 4S

- ▶ 3 height adjustments in the base plate
- ▶ Further height adjustment at the bracket itself
- ▶ Also suitable for narrow rafters



CrossBoard

- ▶ The easy solution for nogging, skylights etc.
- ▶ Complements CrossHook 3S and 4S



CrossHook 2

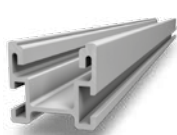
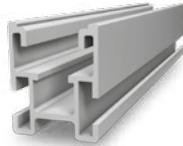
- ▶ For concrete flat tiles/slate
- ▶ With round-slotted bore holes



CrossHook 2G

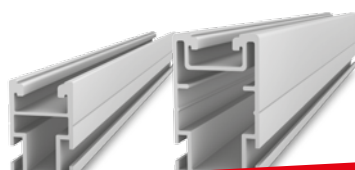
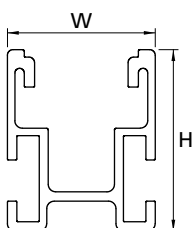
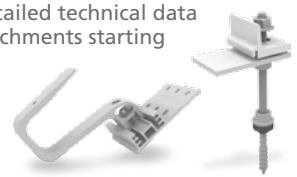
- ▶ For steel roof tiles, type Gerard
- ▶ 3 height adjustments in the base plate
- ▶ Further height adjustment at the bracket itself

TECHNICAL DATA

	CrossRail 36	CrossRail 48
Figure		
Material	Aluminium (EN AW-6063 T66)	
W = width [mm]	40	40
H = height [mm]	36	48
Lengths [m]	2.10/3.15/4.15/6.10	6.10
Weight [kg/m]	0.96	1.24
Cross-bracing with	CrossRail, SingleRail, SolidRail, SpeedRail and MultiRail	

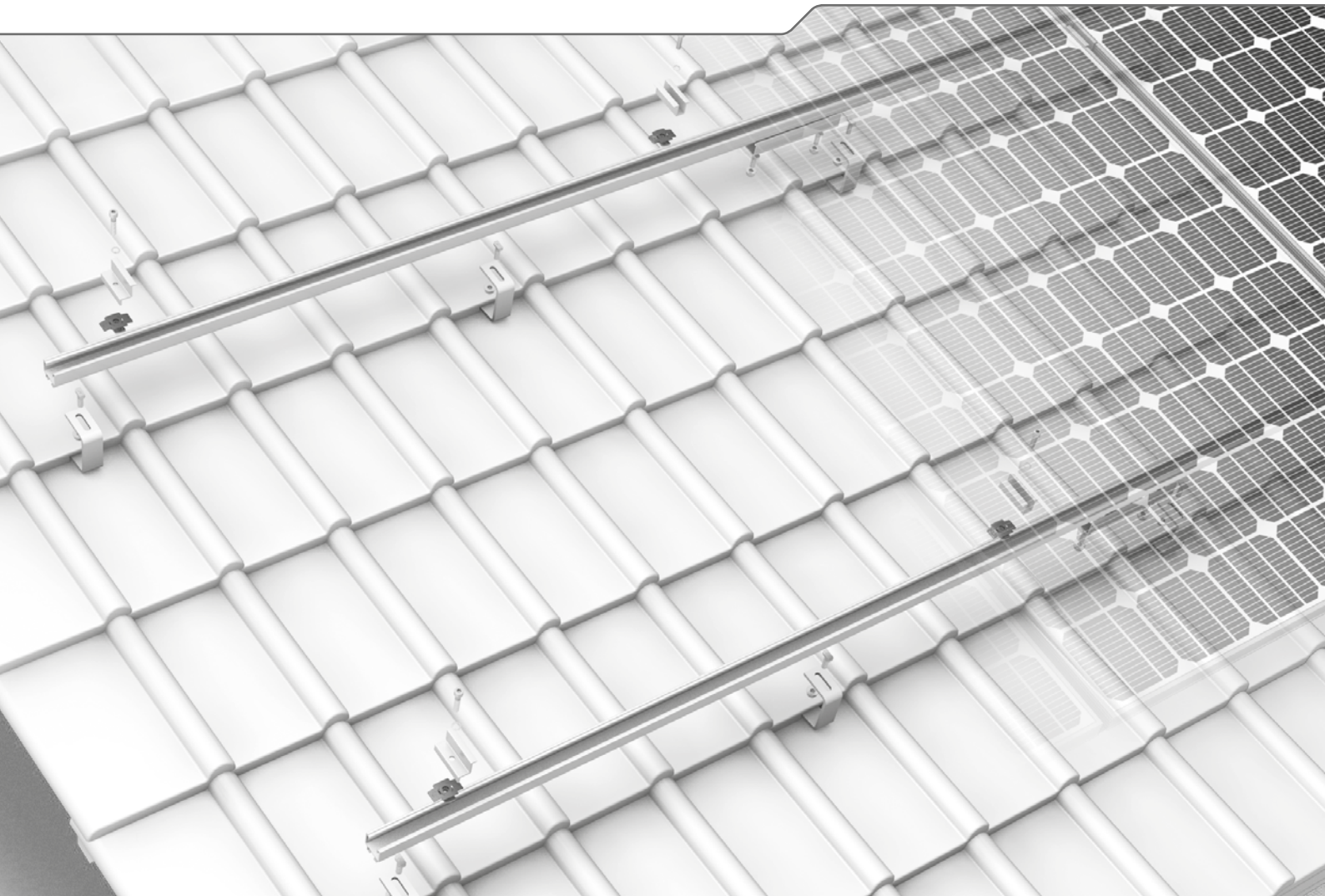
Roof fastenings

You will find detailed technical data on our roof attachments starting on page 20.



CrossRail 62 and 90 for high loads available on request!

SolidRail System



- ▶ Comprehensive range of mounting rails for varying load profiles
- ▶ Robust and structurally proven
- ▶ High flexibility for a diverse range of widths



ROOF FASTENINGS



Roof hook for pantiles

- ▶ Various sizes
- ▶ Solid stainless steel design



Vario 1 and 2 roof hooks

- ▶ For pantiles
- ▶ Height-adjustable under bracket and at battens



Roof hook for plain tile roofing

Also for double roofing



Roof hook for slate roofing

Three boreholes for a secure fit



Roof hook for Coppo roofing

- ▶ Height-adjustable under bracket
- ▶ Flexible placement on rafters



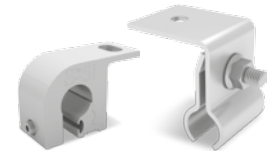
Hanger bolts

- ▶ For corrugated fibre cement or corrugated sheet roofing with wooden substructure
- ▶ Custom height adjustment



Solar fastener

- ▶ For trapezoidal sheet metal, corrugated sheet metal, or corrugated fibre cement roofing
- ▶ For steel, timber or concrete



Standing seam clamps

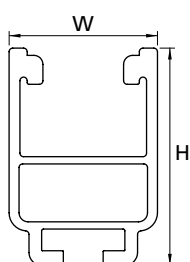
Seam metal clamps for popular standing seam roofs such as Kalzip or Rib-Roof

TECHNICAL DATA

	UltraLight 32	Light 37	Medium 42	Alpine 60
Figure				
Material	Aluminium (EN AW-6063 T66)			
W = width [mm]	39	39	41	41
H = height [mm]	32	37	42	60
Lengths [m]	2.10/3.15/4.15/6.10			
Weight [kg/m]	0.7	0.85	1.3	1.7
Cross-bracing with	CrossRail and SingleRail			

Roof fastenings

You will find detailed technical data on our roof fastenings starting on page 20.

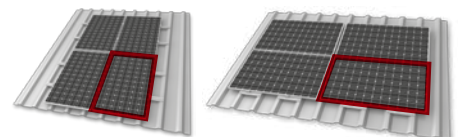
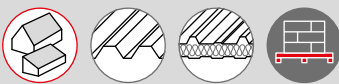


SolidRail LS85 and XL140:
For heavy loads across large widths!

MiniRail System

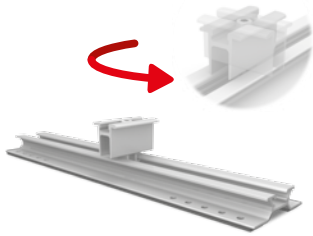


- ▶ Innovative and statically optimised short rail system that is quick and easy to mount
- ▶ Universal module clamps and suitable for portrait and landscape orientation
- ▶ Optimised for storage and transport



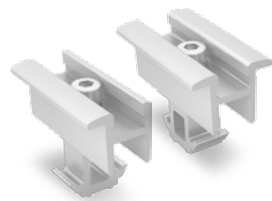
The MiniRail System allows portrait and landscape mounting in the form of grid mounting thanks to the universal module clamps which are rotatable by 90°.

MINIRAIL SYSTEM COMPONENTS



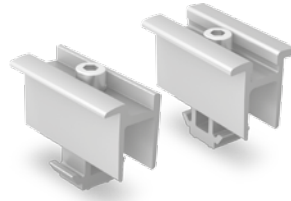
MiniRail

- ▶ Landscape and portrait mounting with MiniClamp MC/EC
- ▶ Suitable for almost all crest spacings



MiniClamp MC/EC 27 - 35 mm

- ▶ Universal module clamp
- ▶ Clamp is rotatable



MiniClamp MC/EC 36 - 50 mm

- ▶ Universal module clamp
- ▶ Clamp is rotatable

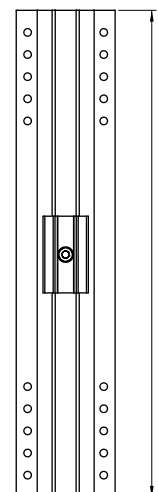
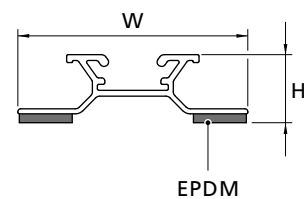


Self-tapping screws

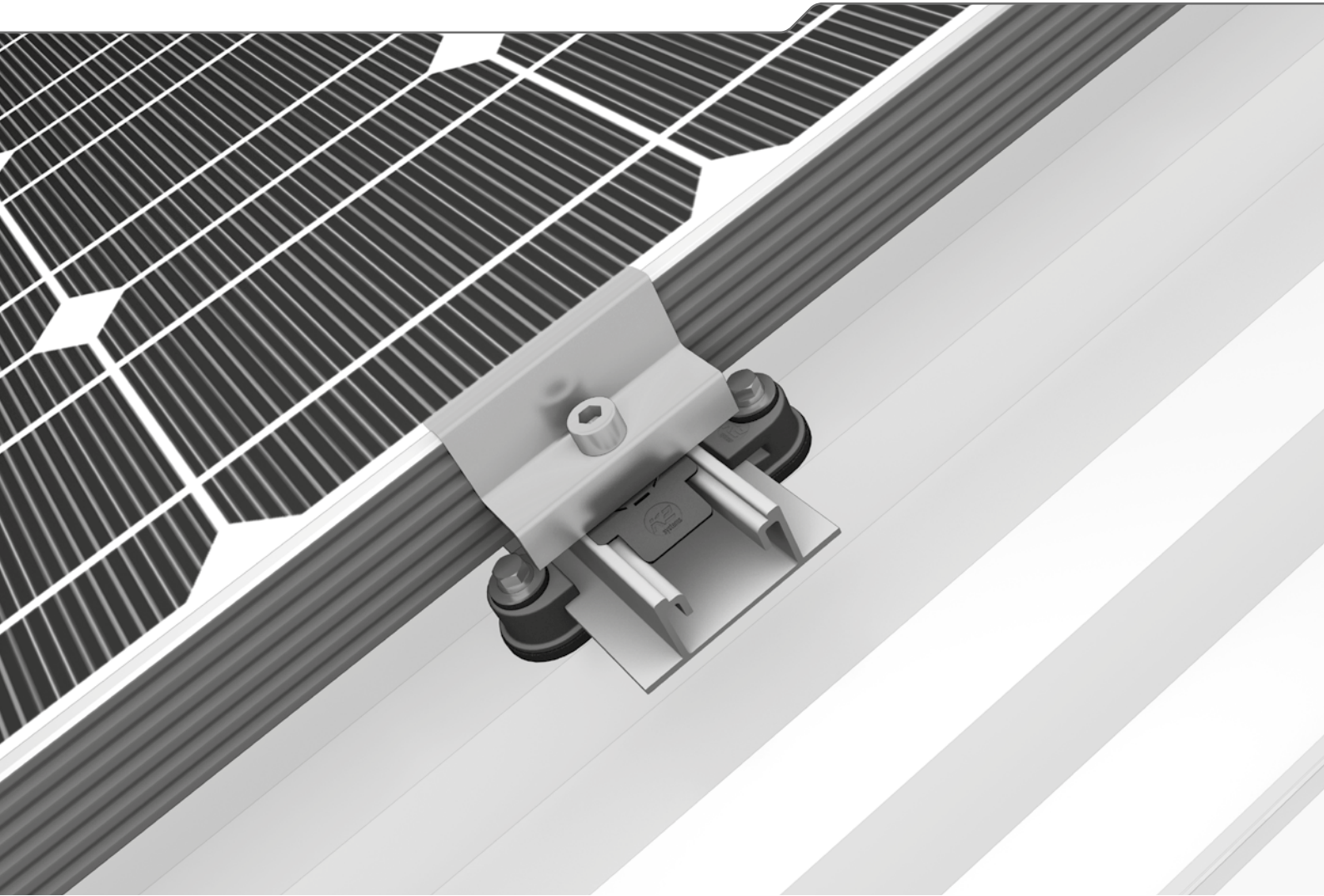
- ▶ Included in MiniRail MC/EC set
- ▶ With sealing washers

TECHNICAL DATA

MiniRail System	
Scope of application	Pitched roofs, 5-75°, with trapezoidal sheet metal or sandwich panels
Fastening type / roof fixture	Screws in roofing with self-tapping sheet metal screws
Requirements	<ul style="list-style-type: none"> ▶ Sheet thickness: >0.5 mm (steel and aluminium) ▶ Sandwich panel: Approval from manufacturer required ▶ Crest width: At least 25 mm ▶ Maximum crest width: 101 - 175/202 - 350 mm ▶ Distance from boreholes to crest edge: > 8.5 mm ▶ Module frame height: 27 - 35/36 - 50 mm
Module orientation	Vertical or horizontal
Material	Aluminium (EN AW-6063 T66/ EN AW-6082 T6); EPDM
W = width [mm]	86.8
H = height [mm]	20
L = rail length [mm]	385



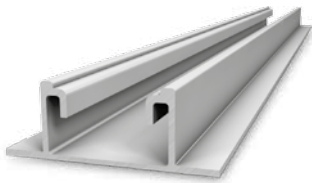
SpeedRail System



- ▶ The proven long rail system for trapezoidal sheet applications as well as floating suspension with controlled thermal linear expansion
- ▶ Our most popular system – over 1 GW installed worldwide
- ▶ All-rounder with only 4 installation steps – also suitable for high loads



SPEEDRAIL SYSTEM COMPONENTS



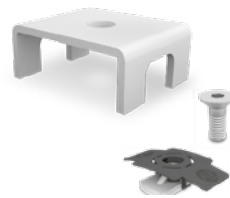
SpeedRail

- ▶ Mounting rail with easy insertion mounting into SpeedClips
- ▶ Various lengths available



SpeedClip

- ▶ Mounting brackets for SpeedRail
- ▶ Simple insertion feature
- ▶ Glass fibre reinforced polyamide with EPDM seals
- ▶ Fastened with self-drilling screws for trapezoidal sheet metal



SpeedLock

- ▶ Mounting lock for SpeedRail in case of thermal expansion
- ▶ In a set with MK2 slot nut and stainless steel screw



SpeedConnector

- ▶ Rail connector for SpeedRail
- ▶ Three boreholes for flexible mounting
- ▶ In a set with countersunk screws

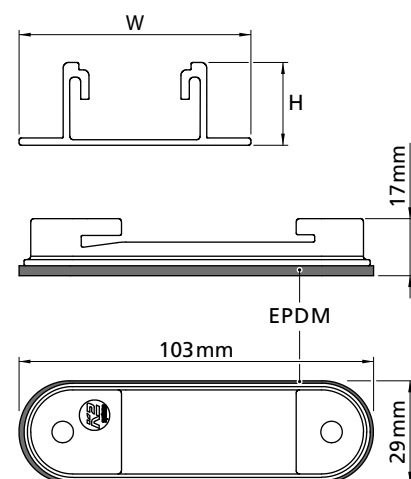


AddOn

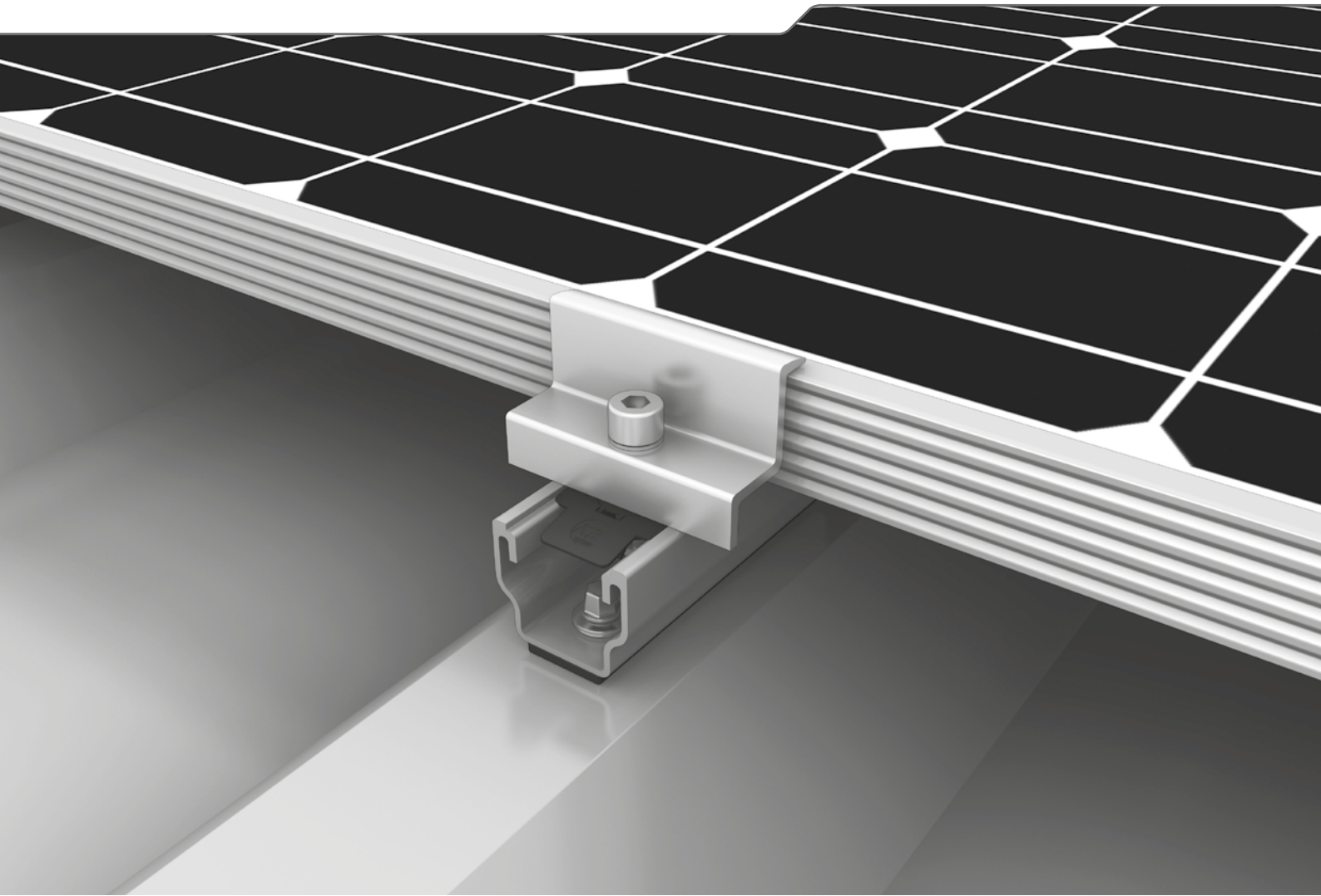
- ▶ Allows the module orientation to be changed
- ▶ Simple shared-rail installation
- ▶ Glass fibre reinforced polyamide

TECHNICAL DATA

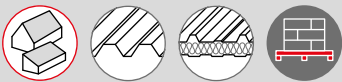
SpeedRail / SpeedClip	
Scope of application	Trapezoidal sheet roof
Fastening type / roof fixture	Insertion mounting into SpeedClips and screws in the roofing
Material	<ul style="list-style-type: none"> ▶ SpeedRail: Aluminium (EN AW-6063 T66; 0.64kg/m) ▶ SpeedClip: Glass fibre reinforced polyamide with EPDM
SpeedRail dimensions W = width [mm] H = height [mm] L = lengths [m]	63 22.5, 2.1 / 3.15 / 4.15 / 6.1
SpeedClip dimensions	See drawing
Cross-bracing with	SingleRail, CrossRail, SolidRail and MultiRail



MultiRail System



- ▶ Easy and proven – as a short rail or a flexible component in various lengths
- ▶ Quick planning with less material and greater effectiveness
- ▶ Solid base rail for S-Dome Small trapezoidal elevation

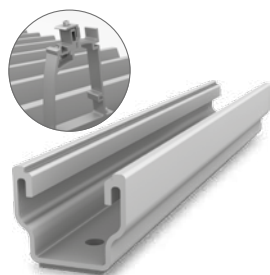


MULTIRAIL VERSIONS



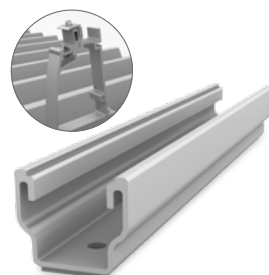
MultiRail 10

- ▶ Length 100 mm
- ▶ Landscape mounting



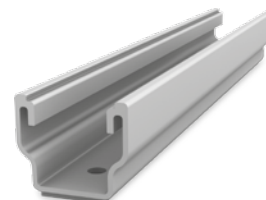
MultiRail 25

- ▶ Length 250 mm
- ▶ Roof connector for S-Dome Small elevation



MultiRail 25/3

- ▶ Length 250 mm
- ▶ Roof connector for S-Dome Small
- ▶ With three boreholes for roofs with 15° inclination

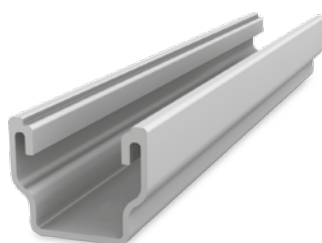


MultiRail 40

- ▶ Length 385 mm
- ▶ For mounting at right angles to raised crest

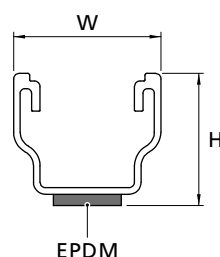
MultiRail 4.20

- ▶ Length 4200 mm
- ▶ Long rail for cutting to customised sizes
- ▶ Without EPDM seal; to be fastened manually with adhesive

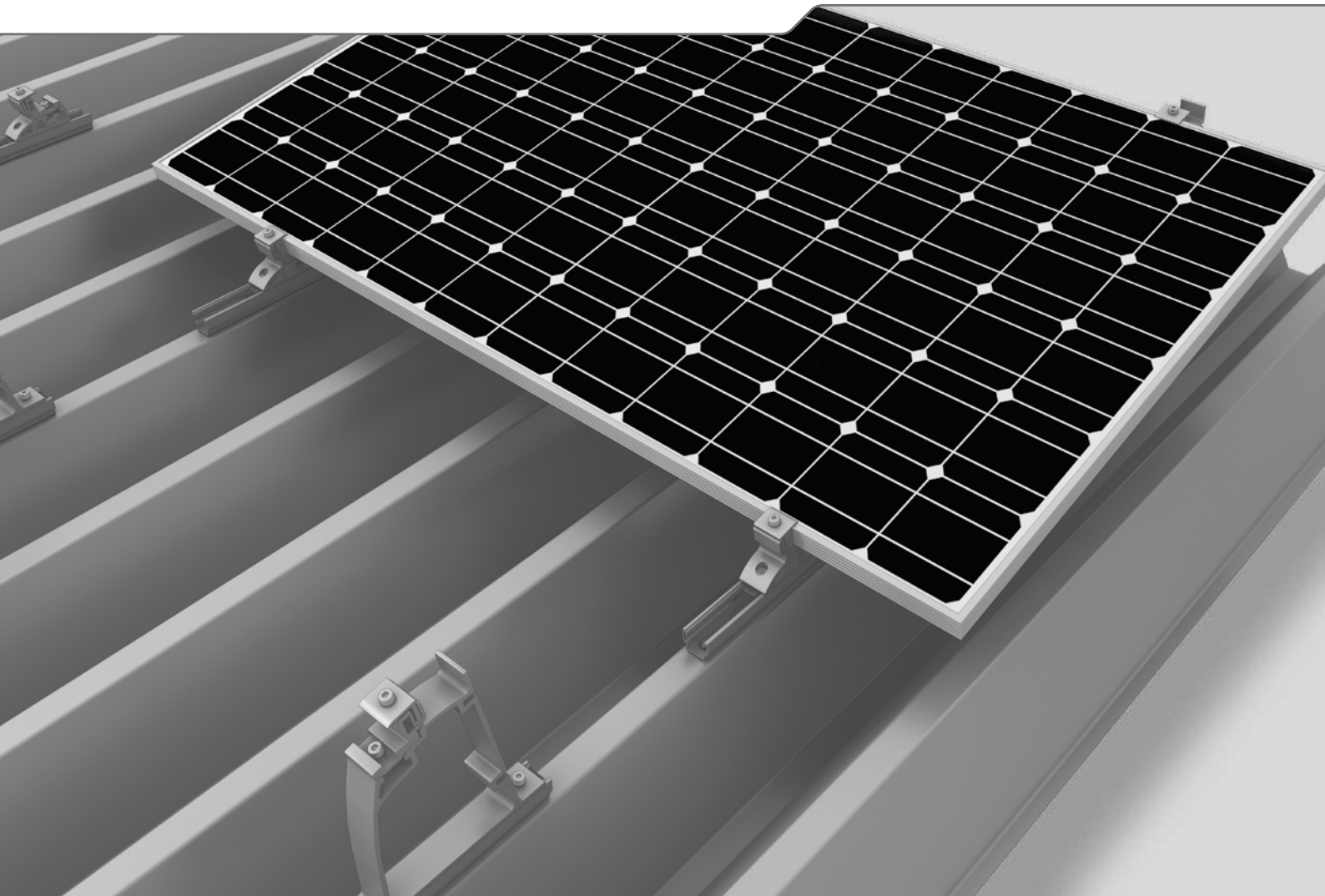


TECHNICAL DATA

	MultiRail 10, 25, 25/3, 40, 4.20
Scope of application	Pitched roofs, 5-75°, with trapezoidal sheet metal or sandwich panel
Fastening type / roof fixture	Fastened with self-tapping sheet screws
Requirements	<ul style="list-style-type: none"> ▶ Sheet thickness: >0.5 mm (steel and aluminium) ▶ Sandwich panel: approval from manufacturer required ▶ Crest width: at least 22 mm ▶ Maximum crest width: independent of crest distance
Material	Aluminium (EN AW-6063 T66); EPDM
W = width [mm]	39
H = height [mm]	35
L = rail length [mm]	<ul style="list-style-type: none"> ▶ MultiRail 10: 100 ▶ MultiRail 25: 250 ▶ MultiRail 40: 385 ▶ MultiRail 4.20: 4200
Cross-bracing with	CrossRail and SingleRail



S-Dome Small System



- ▶ For a roof inclination of up to 15° on trapezoidal sheet metal
- ▶ Economical in terms of materials and transportation; clever connections and strong holding power
- ▶ The perfect combination of the all-round MultiRail component and load-optimised, slim elevations



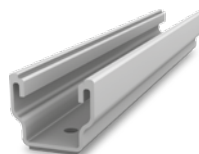
S-DOME SMALL COMPONENTS



Dome S1000 Small
Narrow elevation module support element

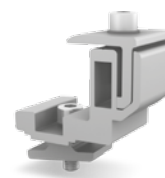


Dome SD Small
Narrow module support element



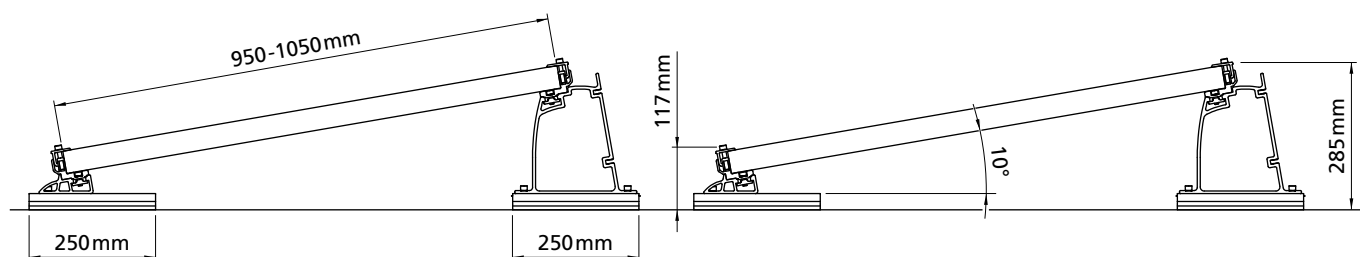
MultiRail 25 or 25/3

- ▶ Length 250 mm
- ▶ 25: For roofs with an inclination $< 15^\circ$
- ▶ 25/3: With three boreholes for roofs with 15° inclination



FlexClamp Small

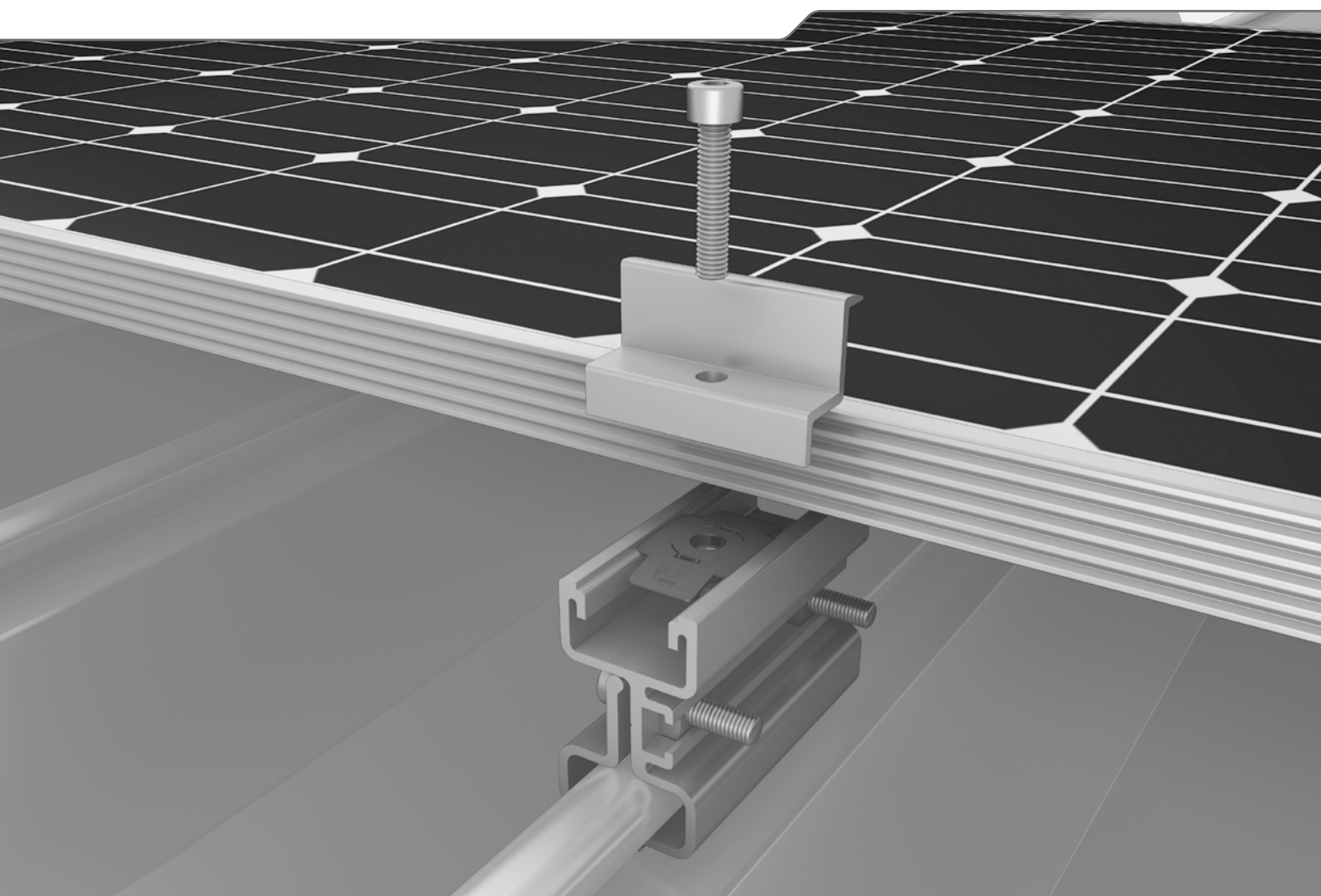
- ▶ Module clamp specifically for S-Dome Small
- ▶ Height adjustable
- ▶ For clamping on the long side of module



TECHNICAL DATA

S-Dome Small	
Scope of application	Flat or pitched roofs $\leq 15^\circ$ with trapezoidal sheet metal roofing
Fastening type / roof fixture	Attached with drilling screws in trapezoidal sheets, parallel to raised crests
Requirements	<ul style="list-style-type: none"> ▶ Sheet thickness for aluminium/steel: min. 0.5 mm ▶ Tensile strength for aluminium: 165 N/mm^2 ▶ Tensile strength for steel: according to approval min. S235 in acc. w/ DIN EN 10025-1 ▶ Crest width: min. 22 mm ▶ Crest spacing: independent of crest distance
Technical specifications	Thermal separation after a max. of 13.5 m: min. 30 mm to max. 150 mm
Inclination angle	10°
Material	<ul style="list-style-type: none"> ▶ Mounting rails, Dome SD Small, Dome S1000 Small, FlexClamp Small: Aluminium (EN AW-6063 T66/ EN AW-6082 T6); EPDM ▶ Small parts: Stainless steel (1.4301) A2

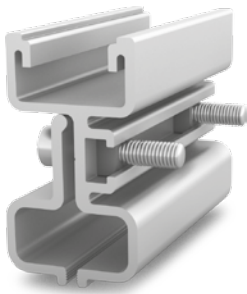
ClampRail System



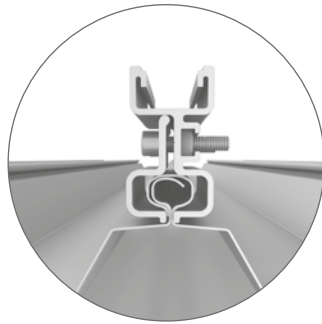
- ▶ All-in-one solution for roof fastening and module mounting
- ▶ One component with low material usage
- ▶ No roof penetration



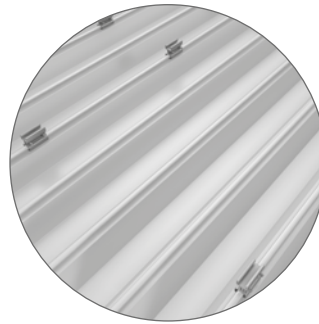
DETAILS



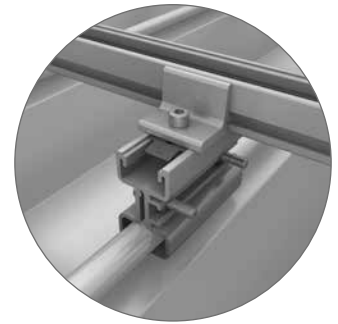
ClampRail is a roof fastener and module support in one single component



ClampRail is fastened to standing seam metal roofs via clamps without roof penetration.



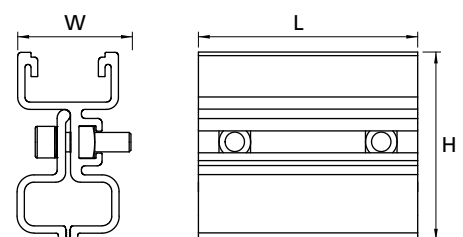
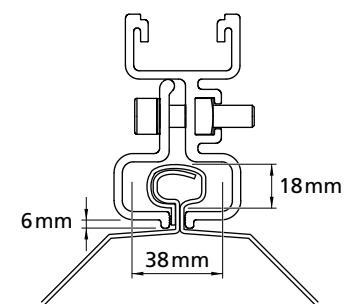
The placement depends on module dimensions and roof geometry.



Cross-bracing possible with CrossRail or SingleRail

TECHNICAL DATA

ClampRail Roof Fastening	
Scope of application	Standing seam roofs
Fastening type / roof fixture	Screw connection, clamping under the standing seam
Requirements	Maximum seam dimensions under seam: <ul style="list-style-type: none"> ▸ Width 38 mm ▸ Height 18 mm ▸ Height under seam: 6 mm
Technical characteristics	Cross-bracing required if clamping area is not viable due to seam spacing
Module orientation	Landscape or portrait cross-bracing
Material	Aluminium (EN AW-6063 T66/EN AW-6082 T6)
W = width [mm]	42
H = height [mm]	77.5
L = rail length [mm]	100
Cross-bracing with	CrossRail and SingleRail



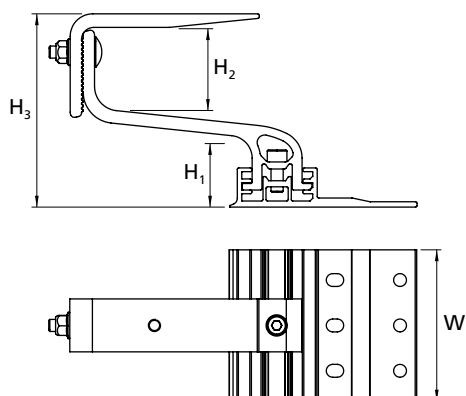
Overview of roof fastenings

CROSSHOOKS AND SINGLEHOOKS FOR CROSSRAIL AND SINGLERAIL

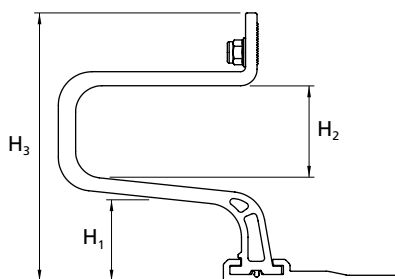
Type / image	Base plate width [W]	Batten height [H ₁] Bracket height [H ₂] Total height [H ₃]	Item number
CrossHook 3S  	100 mm	<ul style="list-style-type: none"> ▸ 40/47/54 mm ▸ 56 mm ▸ approx. 123/130/137 mm 	2000133
CrossHook 4S  	100 mm	<ul style="list-style-type: none"> ▸ 40/47/54 mm ▸ 55 - 85 mm ▸ 120.5 - 165 mm 	2000466
SingleHook 1.1 *  	100 mm	<ul style="list-style-type: none"> ▸ 47.1 mm ▸ 56 mm ▸ 162.9 mm 	2001928
CrossBoard for CrossHook 3S/4S  	2 100 mm	<ul style="list-style-type: none"> ▸ 40/47/54 mm ▸ 56/55 - 85 mm ▸ approx. 123/130/137/ 120.5 - 165mm 	20001972
CrossHook 2G  	100 mm	<ul style="list-style-type: none"> ▸ 40/47/54 mm ▸ No spacing ▸ 89.2 mm 	2000636
CrossHook 2 (BS EN 490)  	150 mm	<ul style="list-style-type: none"> ▸ Fixed ▸ 46 mm ▸ 100 mm 	1004900

* Suitable exclusively for SingleRail



Dimension drawing for CrossHook



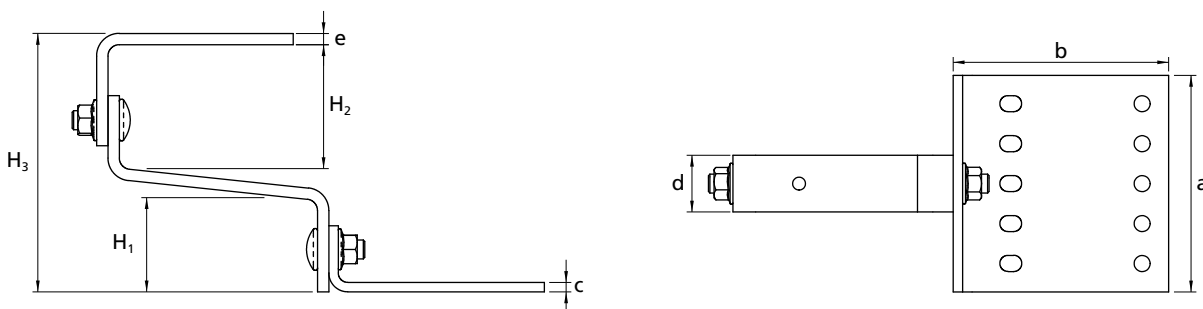
Dimension drawing for SingleHook



STAINLESS STEEL ROOF HOOKS FOR SOLIDRAIL

Type /Figure	Base plate [a x b x c]	Bracket [d x e]	Bracket [H ₁]/[H ₂]	Total height approx. [H ₃]	Item number
Pantiles  	150x60x5 mm	30x6 mm	47/30 mm	133 mm	1000001
	180x80x4 mm	35x6 mm	38/24 mm	124 mm	1000096
	180x80x4 mm	35x6 mm	47/30 mm	150 mm	1000653
	180x80x5 mm	40x8 mm	47/30 mm	121 mm	1000764
Vario 1  	150x60x5 mm	30x6 mm	43/ 55-90 mm	112-145 mm	1000125
Vario 2  	140x55x5 mm	30x6 mm	47 - 59/ 47 - 59 mm	105-155 mm	1000107
Plain tile  	40x50 mm	40x6 mm	62/33 mm	122 mm	1000214
Plain tile, double roofing  	150x45 mm	150x60 mm	66/33 mm	103 mm	1000074
Slate roofing  	40x250 mm	40x65 mm	-/60 mm	72 mm	1000373
Coppo  	150x60x5 mm	30x5 mm	100-130/ 18 mm	137-167 mm	1001068

Dimension drawing



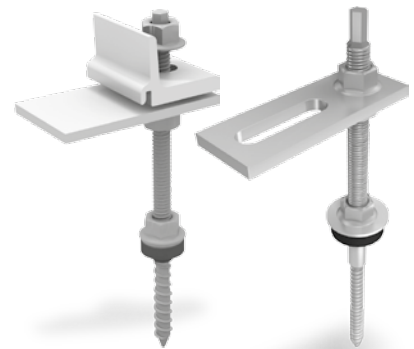
Overview of roof fastenings

HANGER BOLTS

For timber substructures

For fastening the K2 SolidRail and CrossRail mounting rails on roofs with corrugated fibre cement or sheet metal on timber substructures. The K2 hanger bolts are equipped with an extra-long metric thread for installation height adjustment.

Hanger bolts are outfitted with a pre-mounted adapter plate.



CrossRail / SingleRail Hanger Bolts

Type	Item number
M10x180, hexagonal SW 7 mm	1006166
M10x200, hexagonal SW 7 mm	1006167
M10x250, hexagonal SW 7 mm	1006168
M12x200, hexagonal SW 9 mm	1006169
M12x250, hexagonal SW 9 mm	1006170
M12x300, hexagonal SW 9 mm	1006171
M12x350, hexagonal SW 9 mm	1006172
M12x400, hexagonal SW 9 mm	1006173

SolidRail Hanger Bolt

Type	Item number
M10x180, hexagonal SW 7 mm	2000120
M10x200, hexagonal SW 7 mm	2000121
M10x250, hexagonal SW 7 mm	2000122
M12x200, hexagonal SW 9 mm	2000123
M12x250, hexagonal SW 9 mm	2000124
M12x300, hexagonal SW 9 mm	2000125
M12x350, hexagonal SW 9 mm	2000126
M12x400, hexagonal SW 9 mm	2000127

SOLAR FASTENER

For steel, timber and concrete substructures

Solar fasteners (stainless steel) for attaching the K2 mounting rails on roofs with trapezoidal sheet metal, corrugated fibre cement or corrugated sheet metal. Matching M10/M12 adapter plates are available separately (1000058/1000069).



Steel: Solar fastener Ø 8.0 with M10x50 screw thread, E16 dome

Type	Item number
8x64 / 50, length 114 mm	1001491
8x80 / 50, length 130 mm	1002586
8x100 / 50, length 150 mm	1001636
8x125 / 50, length 175 mm	1001412
8x150 / 50, length 200 mm	1001134
8x160 / 50, length 210 mm	1000666
8x200 / 50, length 250 mm	1001751



Steel: Solar fastener Ø 8.0 with M10x50 screw thread, FZD

Type	Item number
8x64 / 50, length 114 mm	1002218
8x80 / 50, length 130 mm	1001435
8x100 / 50, length 150 mm	1001400
8x125 / 50, length 175 mm	1001459
8x150 / 50, length 200 mm	1000985
8x160 / 50, length 210 mm	1004095
8x200 / 50, length 250 mm	1001838



Timber: Solar fastener Ø 8,0 mm
M10x50/70 mm,
metric thread
E14 calotte or
FZD sealing made of EPDM
On request



Concrete / aerated concrete:
Solar fastener Ø 8,0 mm
M10x50/70 mm, metric thread
E14 calotte or FZD sealing made
of EPDM
On request



STANDING SEAM CLAMPS



Our seam clamps are used to fasten the K2 mounting rails onto standing seam roofs or rounded seams. We offer seam clamps for steel or aluminium roofs.

K2 Round Seam Clamp

For Kalzip roofs with rounded seam ends
Screw: M10
Clamping screw: M8
Sheet thickness: 3 mm
Material: Stainless steel
Item no. 2001853



S-5! Z-Mini-FL Round Seam

For Kalzip roofs with rounded seam ends
Slot: 11x22
Clamp: Grub screw
Material: Aluminium
Item no. 1000888



K2 Standing Seam Clamp

For standing seam metal roofs
Screw: M10
Clamping screw: M8
Sheet thickness: 2.5 mm
Material: Stainless steel
Item no. 2001712



S-5! E-Mini-FL Standing Seam

For Kalzip standing seam metal roofs
Slot: 11x22
Clamp: Set screw
Material: Aluminium
Item no. 1001052



Rib-Roof Evolution Round Seam

For Rib-Roof Evolution seam metal roofs with rounded seams
Screw: M10
Clamping screw: M8
Material: Aluminium
Item no. 2002226



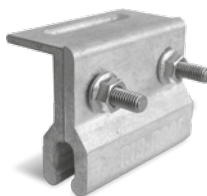
Rib-Roof Speed 500 Standing Seam

For Rib-Roof Speed 500 standing seam metal roofs
Screw: M10
Clamping screw: M8
Material: Aluminium
Item no. 2002225



Rib-Roof 465 Standing Seam

For Rib-Roof 465 standing seam metal roofs
Screw: M10
Clamping screw: M8
Material: Aluminium
Item no. 2002118



Accessories

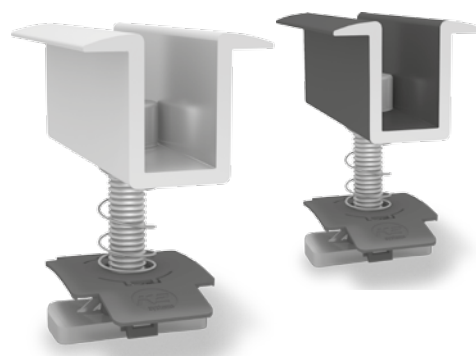
▶ Module clamps	24
▶ Self-drilling wood screw, flange head	26
▶ Self-tapping hexagon screw with sealing washer	26
▶ T-bolt and flange nuts with serration	26
▶ MK2 slot nuts with assembly clip	26
▶ Self-drilling wood screw, flange head, underhead secondary thread	27
▶ Self-drilling wood screw, countersunk head	27
▶ Screw anchor, Multi Monti	27
▶ CrossRail/SingleRail End Caps	28
▶ SolidRail End Caps	28
▶ Lightning protection clamp, Multi half-piece	28
▶ TerraGrif equipotential bonding	28
▶ Pad spacer	29
▶ Compensation plate for aluminium roof hooks	29
▶ Cable clips	29

MODULE CLAMPS

Our module clamps can be easily mounted to any K2 rail. The MK2 slot nut automatically locks in place and can be moved in the rail by pressing lightly on the Allen bolt.

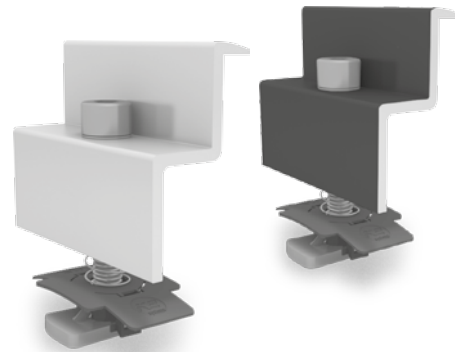
Module middle clamps

Module frame height / description	Item number
30-33 mm/M8x30, aluminium mill finish	1005154
34-38 mm/M8x30, aluminium mill finish	1005148
34-38 mm/M8x30, black anodised	1005150
39-44 mm/M8x35, aluminium mill finish	1004197
39-44 mm/M8x35, black anodised	1005151
45-48 mm/M8x40, aluminium mill finish	1005146
45-48 mm/M8x40, black anodised	1005152
49-50 mm/M8x45, aluminium mill finish	1005149
49-50 mm/M8x45, black anodised	1005153



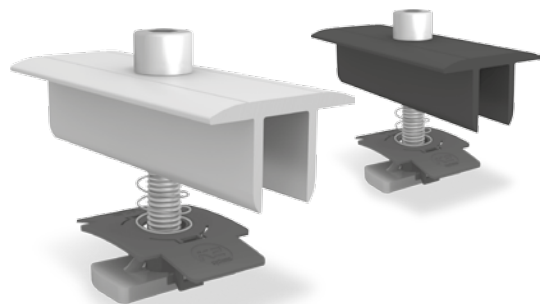
Module end clamps

Module frame height / description	Item number
30-31 mm/M8x30, aluminium mill finish	1005345
32-33 mm/M8x30, aluminium mill finish	1005344
34-36 mm/M8x30, aluminium mill finish	1005169
34-36 mm/M8x30, black anodised	1005268
37-38 mm/M8x30, aluminium mill finish	1005290
37-38 mm/M8x30, black anodised	1005293
39-41 mm/M8x35, aluminium mill finish	1005170
39-41 mm/M8x35, black anodised	1005269
42-44 mm/M8x35, aluminium mill finish	1005291
42-44 mm/M8x35, black anodised	1005295
45-47 mm/M8x40, aluminium mill finish	1005171
45-47 mm/M8x40, black anodised	1005270
48 mm/M8x40, aluminium mill finish	1005292
48 mm/M8x40, black anodised	1005296
49-50 mm/M8x45, aluminium mill finish	1005172
49-50 mm/M8x45, black anodised	1005271



Module middle clamps XS

Module frame height / description	Item number
30-33 mm/M8x50, aluminium mill finish	1005156
34-38 mm/M8x55, aluminium mill finish	1003586
34-38 mm/M8x55, black anodised	1005158
39-44 mm/M8x60, aluminium mill finish	1004908
39-44 mm/M8x60, black anodised	1005159
45-48 mm/M8x65, aluminium mill finish	1005143
45-48 mm/M8x65, black anodised	1005160
49-50 mm/M8x70, aluminium mill finish	1004407
49-50 mm/M8x70, black anodised	1005161

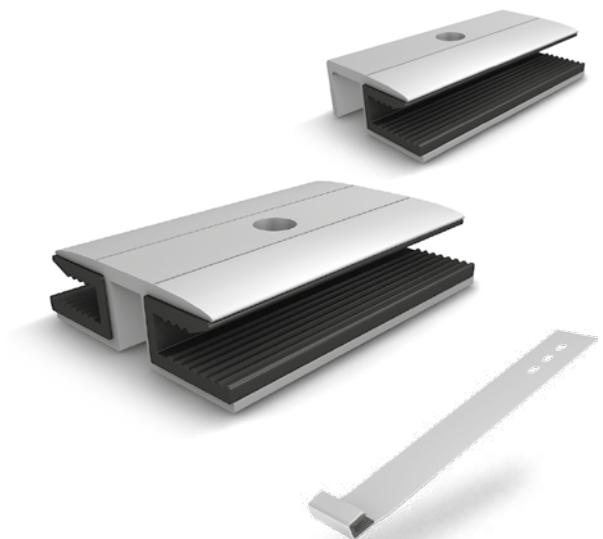


Module clamps for laminate modules

Module middle clamps for fastening laminate modules; approved for First Solar and Calyxo thin-film modules; small module spacing.
Material: Aluminium mill finish, EPDM

Please note: For additional anti-slip protection the K2 Slideguard is suitable for vertical mounting of laminate modules with a glass thickness of 6-9mm.
Material: Stainless steel 1.4016, EPDM

Type / accessory	Item number
Module middle clamp	1003157
Module end clamp	1003158
Slideguard	1005828



Accessories

SELF-DRILLING WOOD SCREW, FLANGE HEAD

Self-drilling wood screw with flange head (Topix) and star socket (Torx) from Heco. With European Technical Assessment (ETA) approval. Material: Stainless steel A2, matches TX 25/40 screwdrivers

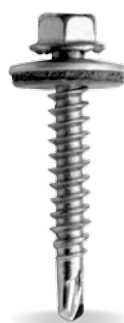
Type	Item number
6x80	1005837
6x100	1004978
8x80	1000642
8x100	1000656
8x120	1001525
8x160	1002366
8x180	1002367



SELF-TAPPING HEXAGON SCREW WITH SEALING WASHER

Approved for steel sheets with a minimum thickness of 0.5 mm and aluminium sheets with a minimum thickness of 0.7 mm (MiniRail 0.5 mm). Material: Stainless steel A2, EPDM

Type	Item number
Drilling screw, SW 8, sealing washer Ø 16 mm 6 x 25 mm	1000212
6 x 36 mm	1001622
Thin sheet screw, virtually chip-free, SW 8, sealing washer Ø 16 mm 6 x 25 mm	1005207
6 x 38 mm	1005193



Drilling screw



Thin sheet screw

T-BOLT AND FLANGE NUTS WITH SERRATION

T-bolt for use in the lower chamber of K2 SolidRail rails. Head form: 28/15; head dimensions: 22.5 x 10.5 x 4 mm
Material: Stainless steel A2 1.4301

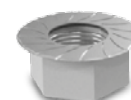
Type	Item number
M10x20	1000637
M10x30	1000041
M8x20/30	1000614/1000368



The flanged nut with serration (similar to ISO 4161) prevents it from loosening.

Material: Stainless steel A2

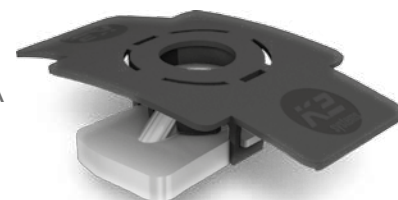
Type	Item number
M8	1000043
M10	1000042



MK2 SLOT NUTS WITH ASSEMBLY CLIP

The MK2 slot nuts lock into place and can be readjusted at any point on the K2 rails by pressing lightly.

Material: Stainless steel 1.4301, PA
Item number: 1001643



SELF-DRILLING WOOD SCREW, FLANGE HEAD, UNDERHEAD SECONDARY THREAD

Self-drilling wood screw (Heco) with flange head (Topix) and star socket (Torx). With building approval. For mounting with over-rafter insulation. Fixes the counterbattens in place using a second screw thread under screw head.

Material: Stainless steel A2, matches TX 40 screwdrivers



Type	Item number
8x240	1003437
8x300	1003438
8x360	1003439

SELF-DRILLING WOOD SCREW, COUNTERSUNK HEAD

Self-drilling wood screw with countersunk head (Heco). With building approval.

Material: Stainless steel A2, matches TX 25 screwdrivers



Type	Item number
6x120	1004443
6x160	1001607

SCREW ANCHOR, MULTI MONTI

Multi Monti screw anchor (Heco) for fastening into concrete; min. drilling depth 55 mm. Steel surface: galvanised and blue passivated, head diameter 17 mm, drilling measurement 6 mm

Material: Stainless steel A4 or galvanised steel, matches TX 30 screwdrivers

Type: 7.5x50 mm

Item number: 1000802

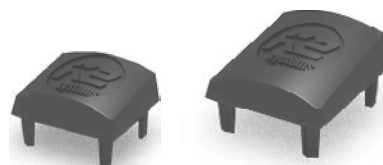


Accessories

CROSSRAIL / SINGLERAIL END CAPS

End caps for K2 CrossRail and SingleRail.
Material: Glass fibre reinforced polyamide

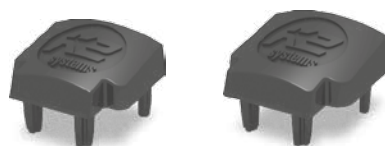
Type	Item number
CrossRail/SingleRail 36	1004767
CrossRail 48	1004768



SOLIDRAIL END CAPS

End caps for K2 SolidRail.
Material: Glass fibre reinforced polyamide

Type	Item number
Light	1004765
Medium	1004766
Alpine	1005053



LIGHTNING PROTECTION CLAMP, MULTI HALF-PIECE

Lightning protection clamp for clamping lightning protection cables with Ø 8mm. For universal use as Tee, cross, parallel and impact clamps.
Material: Aluminium
Item number 1003151



Additional supplies for T-bolt groove;

- ▶ 1 T-bolt M10x30 (1000041), stainless steel A2
- ▶ 1 serrated nut M10 (1000042), stainless steel A2

Additional supplies for rail head chamber:

- ▶ 1 MK2 slot nut with assembly clip (1001643), stainless steel, PA
- ▶ 1 Allen bolt M8x30 (1000086), stainless steel A2
- ▶ 1 K2 washer 8.4x20x1.2 mm (1000122), stainless steel

TERRAGRIF EQUIPOTENTIAL BONDING

Equipotential bonding between module and rail.
Material: Stainless steel

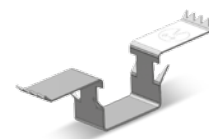
Type	Item number
TerraGrif K2PA 32 Landscape	2000055
TerraGrif U17 Portrait	2000056
TerraGrif K2SZ Landscape/Portrait	2001881



K2PA



U17



K2SZ

PAD SPACER

PA spacer shim to compensate for height differences when mounting K2 roof hooks with screw threads and K2 rails (except SolidRail).

Any number of spacer shims can be stacked to provide customised height.

Material: Glass fibre reinforced PA

Material thickness: 2 mm

Item no.: 1002361



HEIGHT COMPENSATOR FOR ALUMINIUM ROOF HOOKS

To compensate batten differences so that the bracket height of each roof hook can be individually adjusted.

Material: Aluminium

Material thickness: 4 mm

Item no.: 2002332



CABLE CLIPS

Type	Item number
Omega Cable Clip Suitable for CrossRail, SingleRail, SolidRail, S-Rock 4 cables with Ø 6 mm Material: Polypropylene with UV stabiliser	1005394
Cable Routing Clip Suitable for clamping in module frames with a thickness of 1.5-2.5 mm and S-Rock 4 cables with Ø 6 mm Material: Spring steel	2002322
Dome Wire Hanger Suitable for S-Dome and D-Dome 1 cable with Ø 6 mm Material: Stainless steel (1.4310)	2002324



Omega Cable Clip

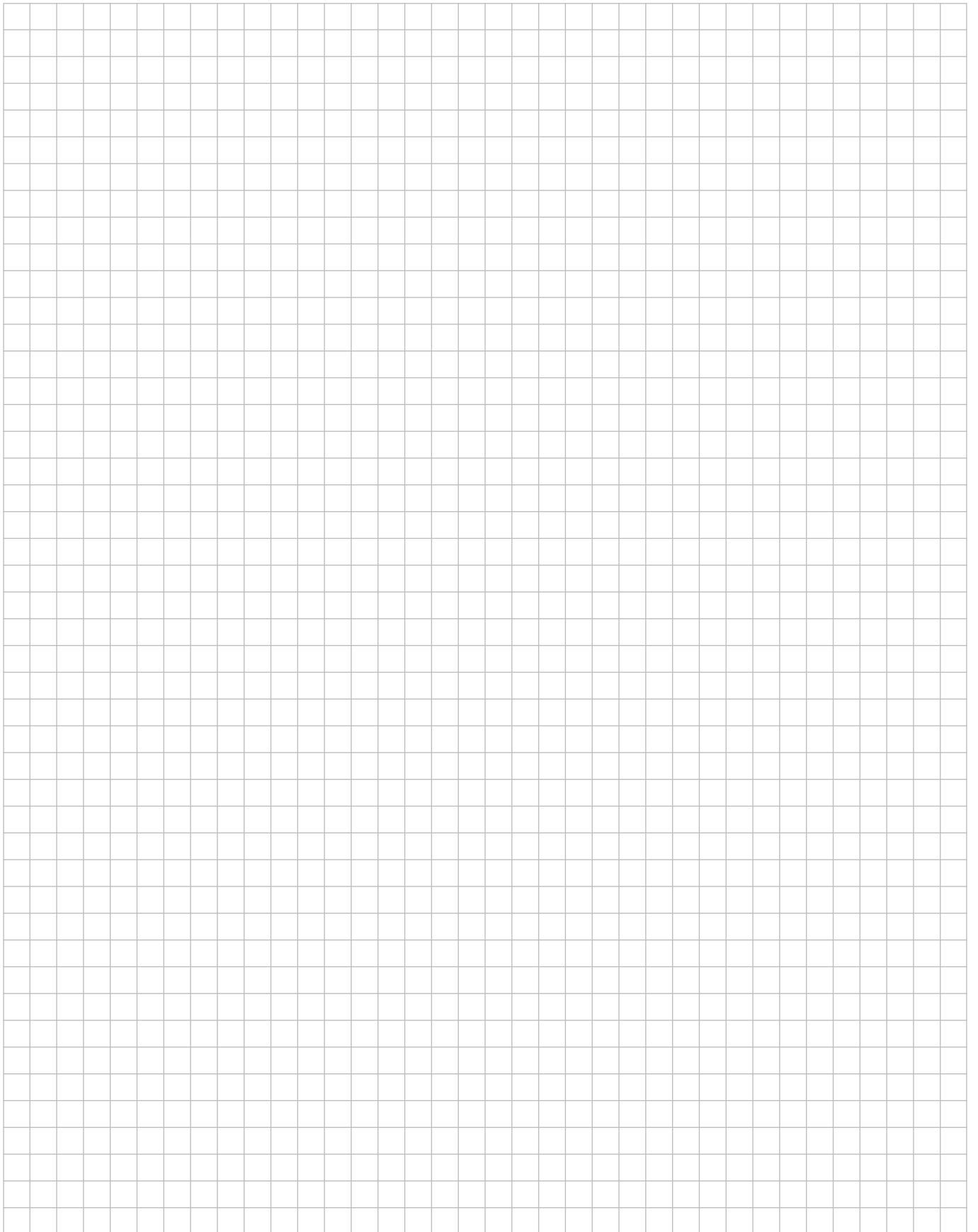


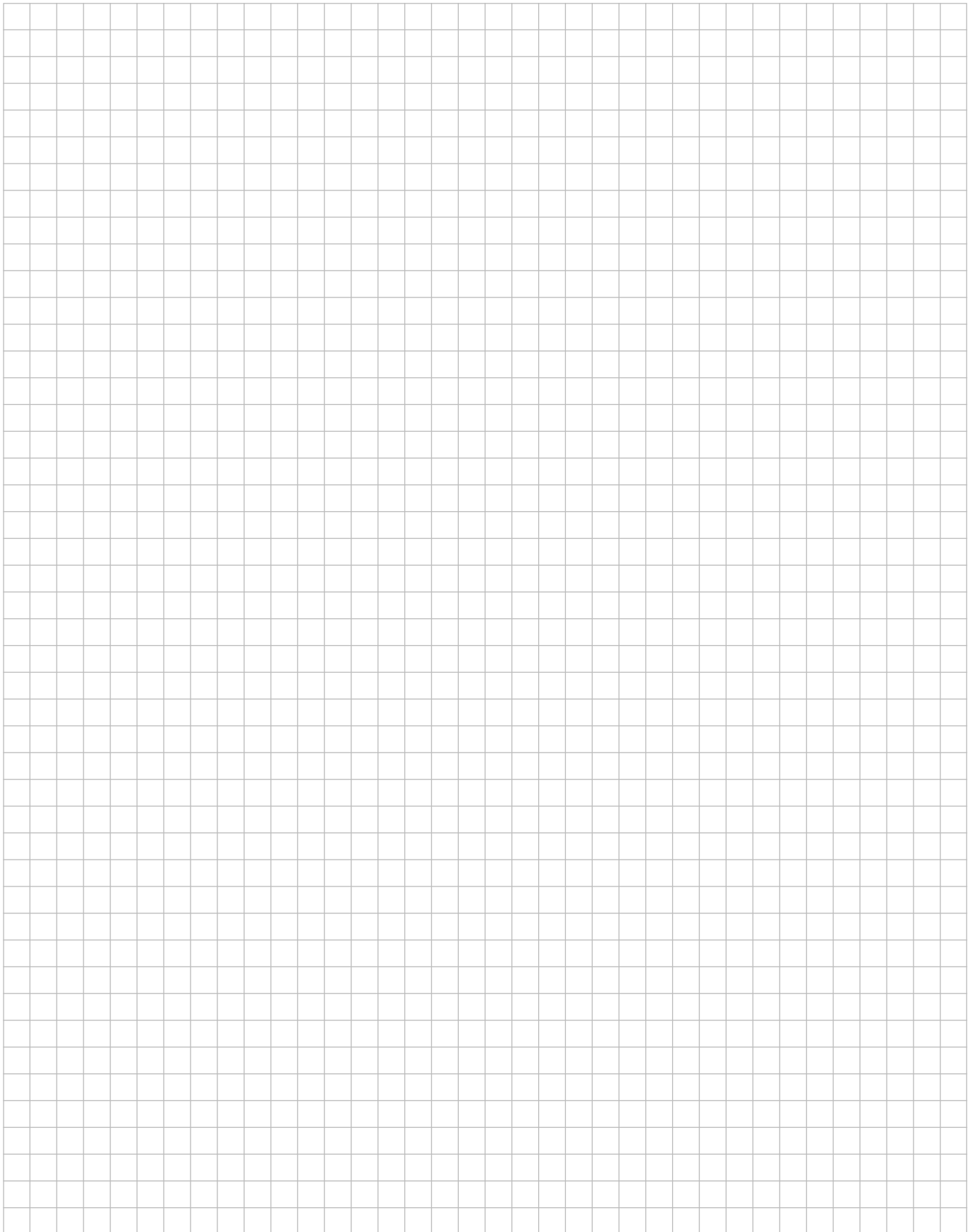
Cable Routing Clip



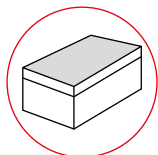
Dome Wire Hanger

Notes

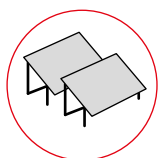
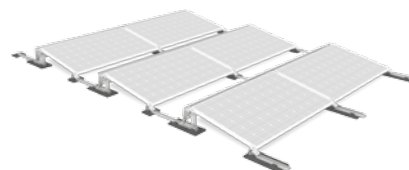




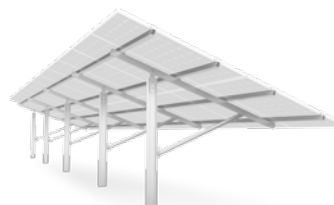
OTHER K2 SYSTEMS



▶ Flat roof systems



▶ Ground mounted systems



K2 Systems GmbH

Industriestraße 18
71272 Renningen
Germany

Tel. +49 (0) 7159-42059-0
Fax +49 (0) 7159-42059-177

info@k2-systems.com
www.k2-systems.com