



Smart
connections.

Data sheet

PIKO 10-20

PIKO inverter: flexible, communicative and practical

Flexible in use

3-phase feed-in

Up to 3 MPP trackers suited to the layout of almost all roofs

Wide input voltage range for flexible string design

Smart connected

Standard integrated communication package with data logger, system monitoring and Webserver

Free Solar Portal and Solar App for monitoring the PV system

Many interfaces without additional components: Display, network and control interfaces

Smart performance

Fast, self-learning shadow management – adapts individually to the installation site

Dynamic active power control and energy consumption measurement via optional KOSTAL Smart Energy Meter

Integrated KOSTAL Smart AC Switch takes the place of the external circuit breaker (only Piko 15-20)

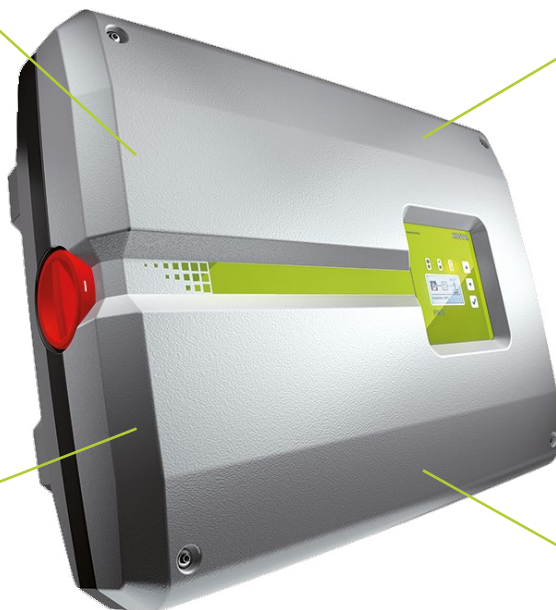
Easy to install

Simple device configuration using commissioning wizard

Integrated switch contact for self-consumption optimisation

Integrated electronic DC switch

Quick, uncomplicated and tool-free AC and DC installation



PIKO 10-20: compact and rapidly deployable



A



B



C

PIKO 10-12: (A) 44.5 cm, (B) 58.0 cm, (C) 24.8 cm

PIKO 15-20: (A) 54.0 cm, (B) 70.0 cm, (C) 26.5 cm

Technical data PIKO 10-20

Power class		10	12	15	17	20	
Input side (DC)	Max. PV power ¹⁾ (cos $\varphi = 1$)	kWp	15	18	22.5	25.5	30
	Nominal DC power	kW	10.8	12.3	15.3	17.4	20.4
	Rated input voltage ($U_{DC,r}$)	V	680				
	Start-up input voltage ($U_{DCstart}$)	V	180				
	Input voltage range ($U_{DCmin} - U_{DCmax}$)	V	160...1000				
	MPP range at rated output in single-tracker operation ($U_{MPPmin} - U_{MPPmax}$)	V	527...800	626...800	-	-	-
	MPP range at rated output in two-tracker operation ($U_{MPPmin} - U_{MPPmax}$)	V	sym: 290/290...800 unsym: 390/250...800	sym: 345/345...800 unsym: 490/250...800	390...800	440...800	515...800
	MPP range at rated output in three-tracker operation ($U_{MPPmin} - U_{MPPmax}$)	V	-	-	sym: 260/260/260...800 unsym: 325/325/250...800	sym: 290/290/290...800 unsym: 375/375/250...800	sym: 345/345/345...800 unsym: 450/450/250...800
	MPP working voltage range ($U_{MPPworkmin} - U_{MPPworkmax}$)	V	180...800				
	Max. working voltage ($U_{DCworkmax}$)	V	800				
	Max. input current (I_{DCmax}) per DC input ²⁾	A	sym: 18/18 unsym: 20/10		sym: 20/20/20 unsym: 20/20/10		
	Max. input current with parallel connection ²⁾ (DC1+DC2 / DC3 input)	A	36/-		40/20		
	Max. PV short-circuit current ($I_{SC,PV}$) per DC input ²⁾	A	25				
	Number of DC inputs		2		3		
	Number of independent MPP trackers		2		3		
Output side (AC)	Rated power. cos $\varphi = 1$ ($P_{AC,r}$)	kW	10	12	15	17	20
	Max. apparent output power. cos φ_{adj}	kVA	10	12	15	17	20
	Min. output voltage (U_{ACmin})	V	184				
	Max. output voltage (U_{ACmax})	V	264.5				
	Rated output current ($I_{AC,r}$)	A	14.6	17.4	21.7	24.6	29.0
	Max. output current (I_{ACmax})	A	16.2	19.3	24.2	27.4	32.2
	Short-circuit current (peak/RMS)	A	25/16.6	27.4/16.7	42/28.5	41.3/29	51/36.5
	Grid connection		3N-. 400V. 50 Hz				
	Rated frequency (f_r)	Hz	50				
	Min./max. grid frequency (f_{min}/f_{max})	Hz	47/51.5				
	Setting range of the power factor (cos $\varphi_{AC,r}$)		0.8...1...0.8				
	Power factor for rated power (cos $\varphi_{AC,r}$)		1				
	Max. THD	%	3				
	Standby (night-time consumption)	W	1.8				
	η	Max. efficiency	%	97.7	97.7	98.0	98.0
European efficiency		%	97.1	97.1	97.2	97.3	97.3
MPP adjustment efficiency		%	99.9	99.9	99.9	99.9	99.9

Power class		10	12	15	17	20		
System data	Topology: Without galvanic isolation – transformerless						✓	
	Protection class according to IEC 60529 (housing / fan)						IP 65 / IP 55	
	Protective class in accordance with IEC 62103						I	
	Overvoltage category in accordance with IEC 60664-1, input side (PV generator)						II	
	Overvoltage category in accordance with IEC 60664-1, output side (grid connection)						III	
	Degree of contamination						4	
	Environmental category (outdoor installation)						✓	
	Environmental category (indoor installation)						✓	
	UV resistance						✓	
	AC cable diameter (min-max)	mm						9...17
	AC cable cross-section (min-max)	mm ²	4...6					6...16
	DC cable cross-section (min-max)	mm ²						4...6
	Max. fuse protection on output side		B25/C25			B32/C32	B40/C40	
	Internal operator protection in accordance with EN 62109-2							RCCB type B
	Independent disconnection device according to VDE 0126-1-1							✓
	Height/width/depth	mm (in)	445/580/248 (17.52/22.83/9.76)					540/700/265 (21.26/27.56/10.43)
	Weight	kg (lb)	37.5 (82.67)					48.5 (106.9)
	Cooling principle – regulated fans							✓
	Max. air throughput	m ³ /h	2 x 48				2 x 84	
	Max. noise emission	dBA	44					56
Ambient temperature	°C (°F)						-20...60 (-4...140)	
Max. installation altitude above sea level	m (ft)						2000 (6562)	
Relative humidity	%						4...100	
Connection technology, DC side							SUNCLIX plug	
Connection technology, AC side							Spring-type terminal strip	
Interfaces	Ethernet LAN (RJ45) / RS485 / S0						2 / 1 / 1	
	Analogue inputs						1	
	Potential-free contact for self-consumption control						1	
	KOSTAL Smart AC Switch			-				✓
	Webserver (user interface)						✓	
	KOSTAL Smart Warranty / Warranty ⁴⁾	Years						5 (2)
	Optional warranty extension for (years)							5/10/15
Directives/Certification ³⁾							CE, GS, EN 62109-1, EN 62109-2, EN 60529, IEC 61683, CEI 0-21, EN 50438*, G83/2, IEC 61727, IEC 62116, RD 1699, TOR D4, UNE 206006 IN, UNE 206007-1 IN, UNE 217001 IN, UTE C15-712-1, VDE 0126-1-1, VDE-AR-N 4105	

Subject to technical changes. Errors excepted. You can find current information at www.kostal-solar-electric.com. Manufacturer: KOSTAL Industrie Elektrik GmbH, Hagen, Germany

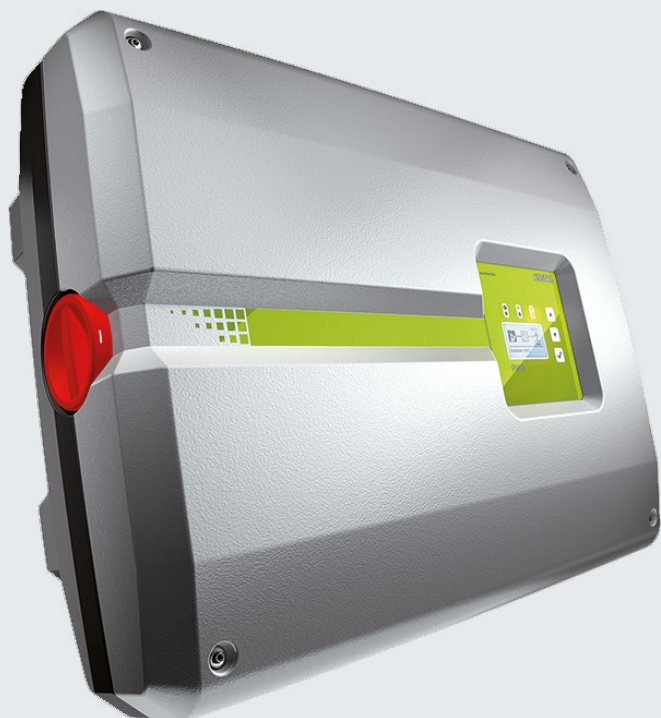
¹⁾ You should avoid operating the inverter continuously at above 110% of the DC rated output

²⁾ The maximum permissible PV module nominal current is 10.5 A. The inverter automatically limits the input current to the specified values.

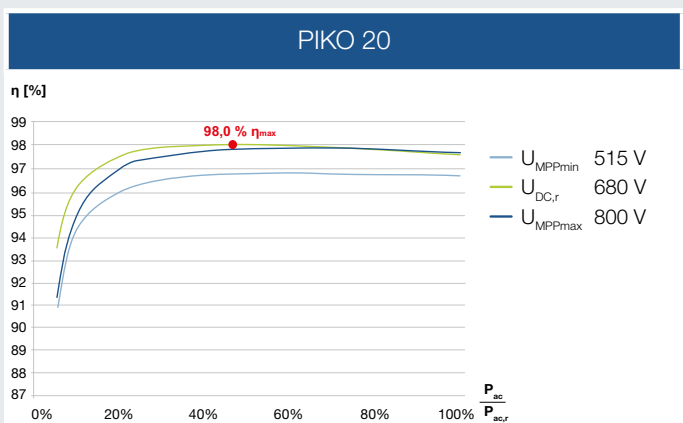
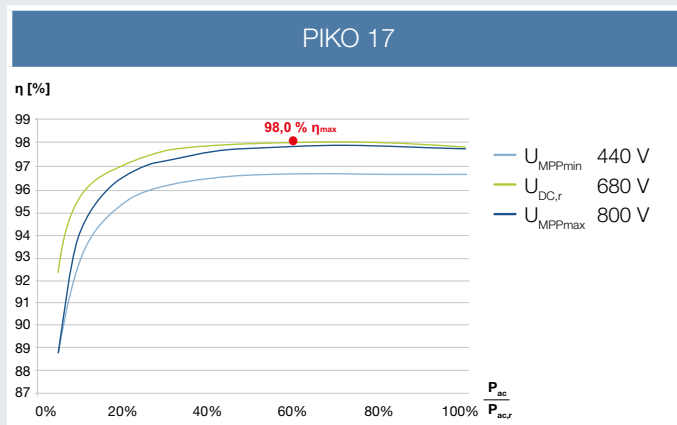
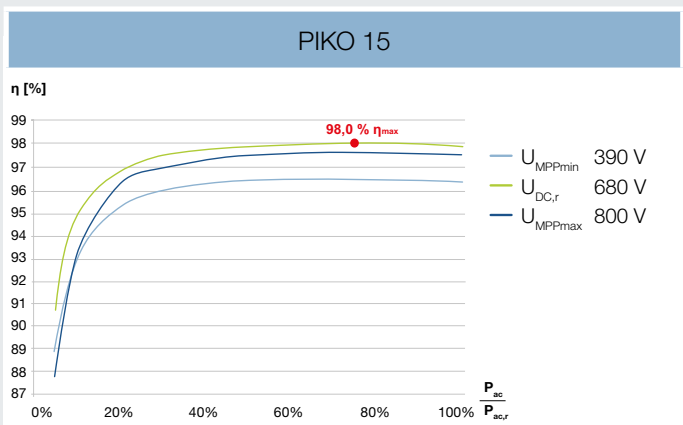
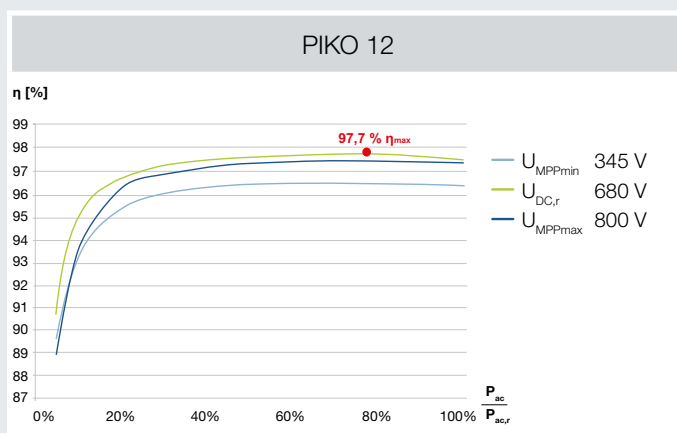
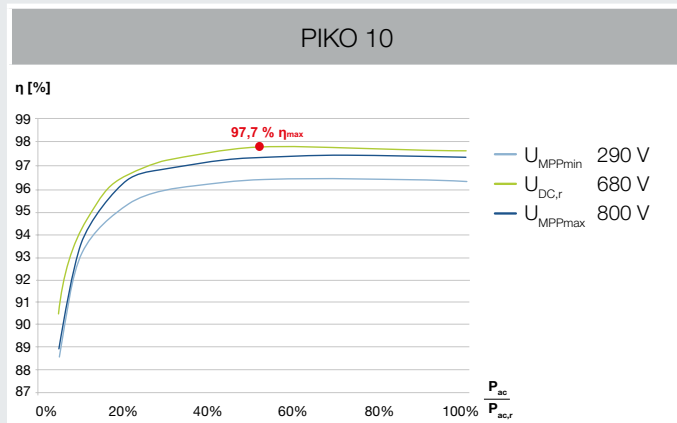
³⁾ Does not apply to all national annexes to EN 50438

⁴⁾ KOSTAL Smart Warranty: 5-year warranty only after registration in the KOSTAL Solar online shop

PIKO inverters - the new generation



- 10
- 12
- 15
- 17
- 20



Services for our products

FAQs:
kostal-solar-electric.com/service-support

Product registration, KOSTAL Smart Warranty, warranty extension or purchase of accessories:
shop.kostal-solar-electric.com

Get in touch: service-solar@kostal.com

KOSTAL

KOSTAL Solar Electric GmbH
Hanferstr. 6
79108 Freiburg i. Br.
Deutschland
Telefon: +49 761 47744 - 100
Fax: +49 761 47744 - 111

KOSTAL Solar Electric Ibérica S.L.
Edificio abm
Ronda Narciso Monturiol y Estarriol, 3 Torre
B, despachos 2 y 3
Parque Tecnológico de Valencia
46980 Valencia
España
Teléfono: +34 961 824 - 934
Fax: +34 961 824 - 931

KOSTAL Solar Electric France SARL
11, rue Jacques Cartier
78280 Guyancourt
France
Téléphone: +33 1 61 38 - 4117
Fax: +33 1 61 38 - 3940

KOSTAL Solar Electric Hellas E.Π.E.
47 Steliou Kazantzidi st., P.O. Box: 60080 1st
building – 2nd entrance
55535, Pilea, Thessaloniki
Ελλάδα
Τηλέφωνο: +30 2310 477 - 550
Φαξ: +30 2310 477 - 551

KOSTAL Solar Electric Italia Srl
Via Genova, 57
10098 Rivoli (TO)
Italia
Telefono: +39 011 97 82 - 420
Fax: +39 011 97 82 - 432

KOSTAL Solar Elektrik Turkey
Mahmutbey Mah. Taşocağı Yolu Cad.
No:3 (B Blok), Ağaoğlu My Office 212
Kat:16, Ofis No:269
Bağcılar - İstanbul / Türkiye
Telefon: +90 212 803 06 24
Faks: +90 212 803 06 25

www.kostal-solar-electric.com