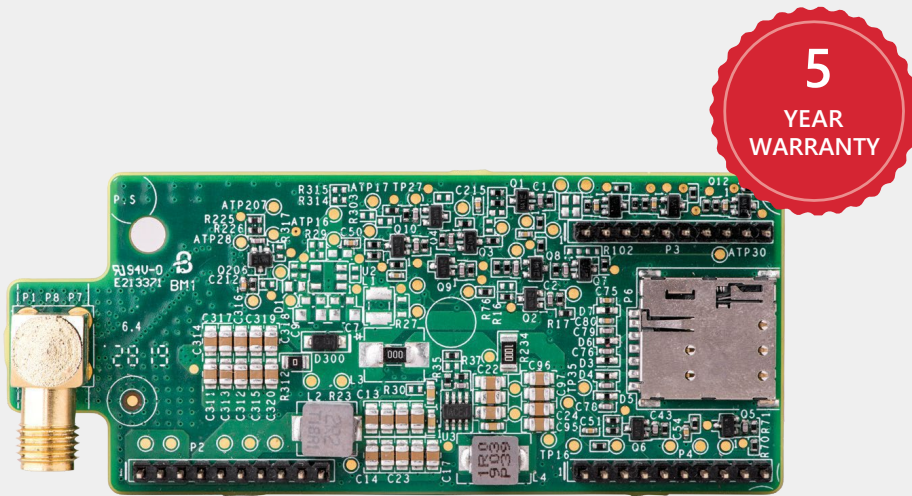


Cellular Plug-In

CELL-B-R0-GLO-V-S0

COMMUNICATION



Cellular Internet Connectivity for Commercial and Residential Installations

- Compatible with SetApp-enabled inverters
- Connects SolarEdge inverters wirelessly to the internet
- No need for internet infrastructure at site
- Installed within the inverter enclosure for outdoor resilience, or in the communication gateway
- Supports high bandwidth monitoring of inverters, optimizers, batteries, meters and weather stations
- Enables remote analysis and troubleshooting

/ Cellular Plug-In

CELL-B-R0-GLO-V-S0

Model Number: CELL-B2

COMPATIBLE INVERTERS		(All SolarEdge Inverters with SetApp Configuration)	UNITS
Number of Monitored Inverters with a Single Cellular Plug-in	Commercial: Up to 32 inverters ⁽¹⁾ Residential: 1 inverter		
Monitoring	Data sampled every 5 minutes and sent to SolarEdge server continuously		
Monthly Data - per Inverter	7.8		MB
Monthly Data - per Power Optimizer	0.15		MB
Monthly Data - per Revenue Grade Meter	0.3		MB
Monthly Data - per Export or Consumption Meter	3		MB
Monthly data - Commercial Gateway	3		MB
RF PERFORMANCE		OPERATING FREQUENCY	
LTE Cat-1 FDD	Band/ Freq (MHz)	Modern Transmit / Modern received	
	2100 (B1)	1920-1980 / 2110-2170	MHz
	1800 (B3)	1710-1785 / 1805-1880	MHz
	2600 (B7)	2500-2570 / 2620-2690	MHz
	900 (B8)	880-915 / 925-960	MHz
	800 (B20)	832-862 / 791-821	MHz
	700 (B28A)	703-748 / 758-803	MHz
WCDMA	2100 (B1)	1920-1980 / 2110-2170	MHz
	900 (B8)	880-915 / 925-960	MHz
GSM	900 (EGSM)	880-915 / 925-960	MHz
	1800 (DCS)	1710.2-1784.8 / 1805.2-1879.8	MHz
Maximum Transmit Power	LTE FDD	23 dBm ± 2dB	
	WCDMA	24 dBm +1dB/-3dB	
	GSM	33 dBm ± 2dB	
Receiver Input Sensitivity Cat-1	LTE FDD	-97	
	WCDMA	-109	
	GSM	-108.6	
Bandwidth	1.4 - 20 ⁽²⁾		MHz
Modulation	LTE	Downlink: QPSK\16QAM\64QAM, Uplink: QPSK\16QAM	
	WCDMA	Downlink: QPSK, Uplink: BPSK	
	GSM	Downlink: GMSK, Uplink: GMSK	
ANTENNA			
Dual Antenna Bands	690-960 / 1710-2700		MHz
Antenna Type	Outdoor		
Antenna Connector	RP-SMA or N plug		
VSWR	≤4.0		
Gain	2		dBi
Polarization	Vertical		
Material	PC Lexan 503R-WH5151L or WH8G952 Sabic		
Dimensions (Length x Diameter)	7.87 x 0.78 / 200 x 20		in / mm
Cable Length	71 / 180		in / mm
STANDARD COMPLIANCE			
EMC and Radio	Global: GCF, Europe: CE, Australia & New Zealand: RCM, Russia: FAC		
RoHS	Yes		
INSTALLATION SPECIFICATIONS			
Dimensions (L x W x H)	3.07 x 1.27 x 0.55 / 78.2 x 32.5 x 14.2		in / mm
Operating Temperature	-40 to +85 / -40 to +185		°C / °F
Mounting	Built into the inverter or purchased separately		
Power consumption	LTE: 2.8 (@23dBm output power) GSM: 2.4 (@33dBm output power) WCDMA: 2 (@24dBm output power)		W
SIM CARD HOLDER			
Type ⁽³⁾	Nano Sim		

* Information concerning the Data Plan's terms & conditions is available in the following link: <https://www.solaredge.com/sites/default/files/se-communication-plan-terms-and-conditions-eng.pdf>

(1) For larger systems, use multiple cellular plug-ins

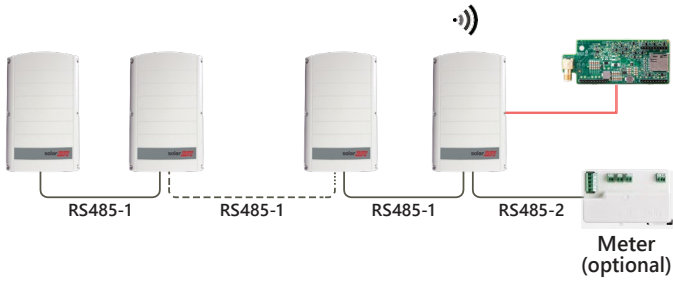
(2) The exact value depends on actual operating band

(3) Non-SolarEdge SIM cards must be LTE Cat-1 or GSM/WCDMA Cellular compatible

/ Cellular Plug-in

CELL-B-R0-GLO-V-S0

Single or Multiple Commercial Inverters



Cellular Tower

Monitoring Platform



Single or Multiple Residential Inverters

