

- ▶ Module clamps
- ▶ Self-tapping screw with sealing washer
- ▶ T-bolt and flange nuts with serration
- ▶ MK2 slot nuts with assembly clip
- ▶ Screw anchor, Multi Monti
- ▶ Washer
- ▶ Lightning protection clamp Multi Sets
- ▶ TerraGrif equipontential bonding
- ▶ Cable clips

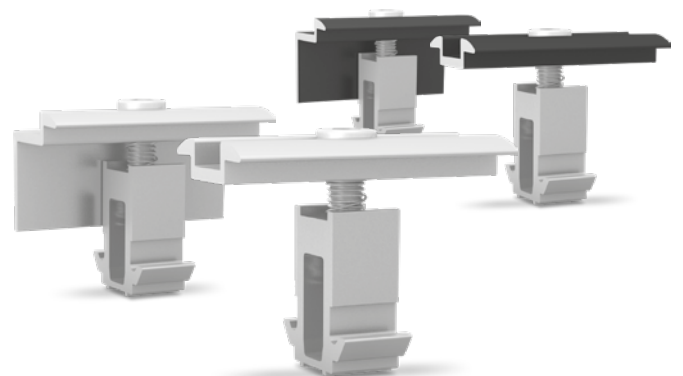
MODULE CLAMPS

Our module clamps can be easily mounted to any K2 rail. The MK2 slot nut automatically locks in place and can be moved about in the rail by pressing the cylinder screw lightly.

MiniClamp MC and EC

For the S-Rock 15° System we use the universal and rotatable MiniClamps MC/EC. MiniClamp MC and EC are universal clamps with a clamping range of 30-50 mm.

Description	Item number
MiniClamp MC, middle clamp, aluminium mill finish	2002558
MiniClamp MC, middle clamp, black anodised	2002609
MiniClamp EC, end clamp, aluminium mill finish	2002559
MiniClamp EC, end clamp, black anodised	2002610

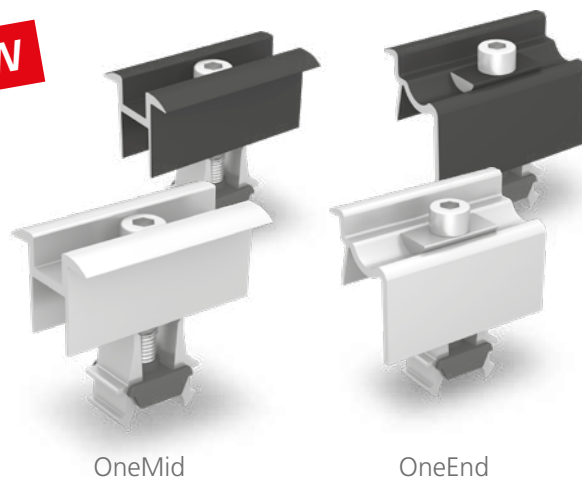


Universal module clamps OneMid and OneEnd

NEW

These module clamps are suitable for the most common module frame heights of 32-42 mm. Compatible with SingleRail, CrossRail, SpeedRail, Multi-Rail, KoverRail, SolidRail plus S- and D-Dome.

Description	Item number
OneMid, mid clamp, aluminium mill finish	2002515
OneMid, mid clamp, black anodised	2002588
OneEnd, end clamp, aluminium mill finish	2002514
OneEnd, end clamp, black anodised	2002589

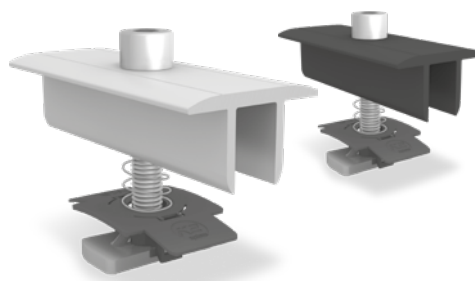


OneMid

OneEnd

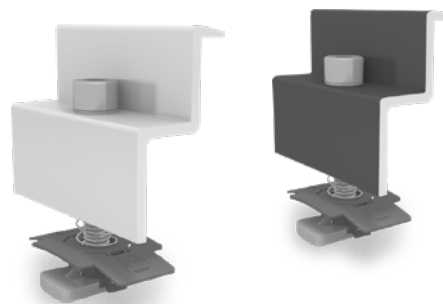
Module middle clamps XS

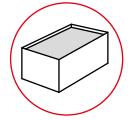
Module frame height / description	Item number
30-33 mm/M8x50, aluminium mill finish	1005156
30-33 mm/M8x50, black anodised	1005157
34-38 mm/M8x50, aluminium mill finish	1003586
34-38 mm/M8x50, schwarz eloxiert	1005158
39-44 mm/M8x60, aluminium mill finish	1004908
39-44 mm/M8x60, black anodised	1005159
45-48 mm/M8x65, aluminium mill finish	1005143
45-48 mm/M8x65, black anodised	1005160
49-50 mm/M8x70, aluminium mill finish	1004407
49-50 mm/M8x70, black anodised	1005161



Module end clamps

Module frame height / description	Item number
30-31 mm/M8x30, aluminium mill finish	1005345
30-31 mm/M8x30, black anodised	1005347
34-36 mm/M8x30, aluminium mill finish	1005169
34-36 mm/M8x30, black anodised	1005268
37-38 mm/M8x30, aluminium mill finish	1005290
37-38 mm/M8x30, black anodised	1005293
39-41 mm/M8x35, aluminium mill finish	1005170
39-41 mm/M8x35, black anodised	1005269
42-44 mm/M8x35, aluminium mill finish	1005291
42-44 mm/M8x35, black anodised	1005295
45-47 mm/M8x40, aluminium mill finish	1005171
45-47 mm/M8x40, black anodised	1005270
48 mm/M8x40, aluminium mill finish	1005292
48 mm/M8x40, black anodised	1005296
49-50 mm/M8x45, aluminium mill finish	1005172
49-50 mm/M8x45, black anodised	1005271





SELF-TAPPING SCREW WITH SEALING WASHER

Thin sheet screw, chip-free; approved for steel/ aluminium sheets with a minimum thickness of 0.5/0.7 mm.

Material: Stainless steel A2, EPDM

Type	Item number
6 x 25 mm, SW 8, sealing washer Ø 16 mm	1005207
6 x 38 mm, SW 8, sealing washer Ø 16 mm	1005193



T-BOLT AND FLANGE NUTS WITH SERRATION

T-bolt for use in the lower chamber of K2 SolidRail rails.

Head form: 28/15

Head dimensions: 22.5 x 10.5 x 4 mm

Material: Stainless steel A2 1.4301

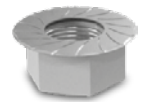
Type	Item number
M10x20	1000637
M10x30	1000041
M8x20	1000614
M8x30	1000368



The serrated nut (similar to ISO 4161) prevents it from loosening.

Material: Stainless steel A2

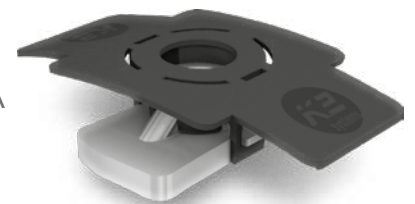
Type	Item number
M8	1000043
M10	1000042



MK2 SLOT NUTS WITH ASSEMBLY CLIP

The MK2 slot nuts can be used at any point on the K2 rails. They automatically lock in place. Subsequently, they can easily be moved about in the rail by pressing them lightly.

Material: Stainless steel 1.4301, PA
Item number: 1001643



SCREW ANCHOR, MULTI MONTI

Multi Monti screw anchor (Heco) for fastening to concrete; min. borehole depth 40 mm. Steel surface: galvanised and blue passivated, head diameter 17 mm, nominal bore diameter 6 mm

Material: galvanised steel

Drive: TX 30

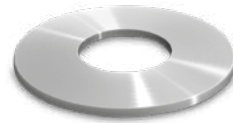


WASHER

Safety mechanism for installing S-Dome Windbreakers.

Material: Stainless steel A2

Item number: 1000273



LIGHTNING PROTECTION CLAMP MULTI SETS

Lightning protection clamp for clamping lightning protection cables with Ø 8 mm.

For universal use as a T cross, parallel and impact clamps. Material: aluminium



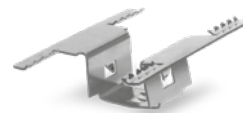
Image	Type	Components	Item number
	Lightning protection clamp Multi Alu 8 mm Set	<ul style="list-style-type: none"> ▶ Lightning protection clamp Multi (1003151), aluminium ▶ Slot nut (1001643), stainless steel, PA ▶ Washer (8,4 × 20 × 1.2 mm), stainless steel A2 ▶ Allen Bolt (M8×30), stainless steel A2 	1004765
	Lightning protection clamp 8 mm Double Set	<ul style="list-style-type: none"> ▶ 2× lightning protection clamps Multi (1003151), Aluminium ▶ Hexagon flange nut with serration M8 (100043); stainless steel A2 ▶ 2× washers (8.4 × 20 × 1.2 mm), stainl. steel A2 ▶ Allen Bolt (M8×40), stainless steel A2 	1004766

TERRAGRIF EQUIPONTENTIAL BONDING

Potential equalisation between module and rail.

Material: Stainless steel

Type	Item number
TerraGrif K2MI Landscape/Portrait	2002649
TerraGrif K2PA 32 Landscape	2000055
TerraGrif U17 Portrait	2000056
TerraGrif K2SZ Landscape/Portrait	2001881



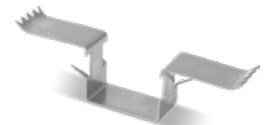
K2MI



K2PA



U17



K2SZ

CABLE CLIPS

Type	Item number
Omega Cable Clip Suitable for CrossRail, SingleRail, SolidRail, S-Rock; 4 cables with Ø 6 mm Material: Polypropylene with UV stabiliser	1005394
Cable Routing Clip Suitable for clamping in module frames with a thickness of 1.5-2.5 mm and S-Rock 4 cables with Ø 6 mm Material: Spring steel	2002322
Dome Wire Hanger Suitable for S-Dome and D-Dome 1 cable with Ø 6 mm Material: Stainless steel (1.4310)	2002324



Omega Cable Clip



Cable Routing Clip



Dome Wire Hanger