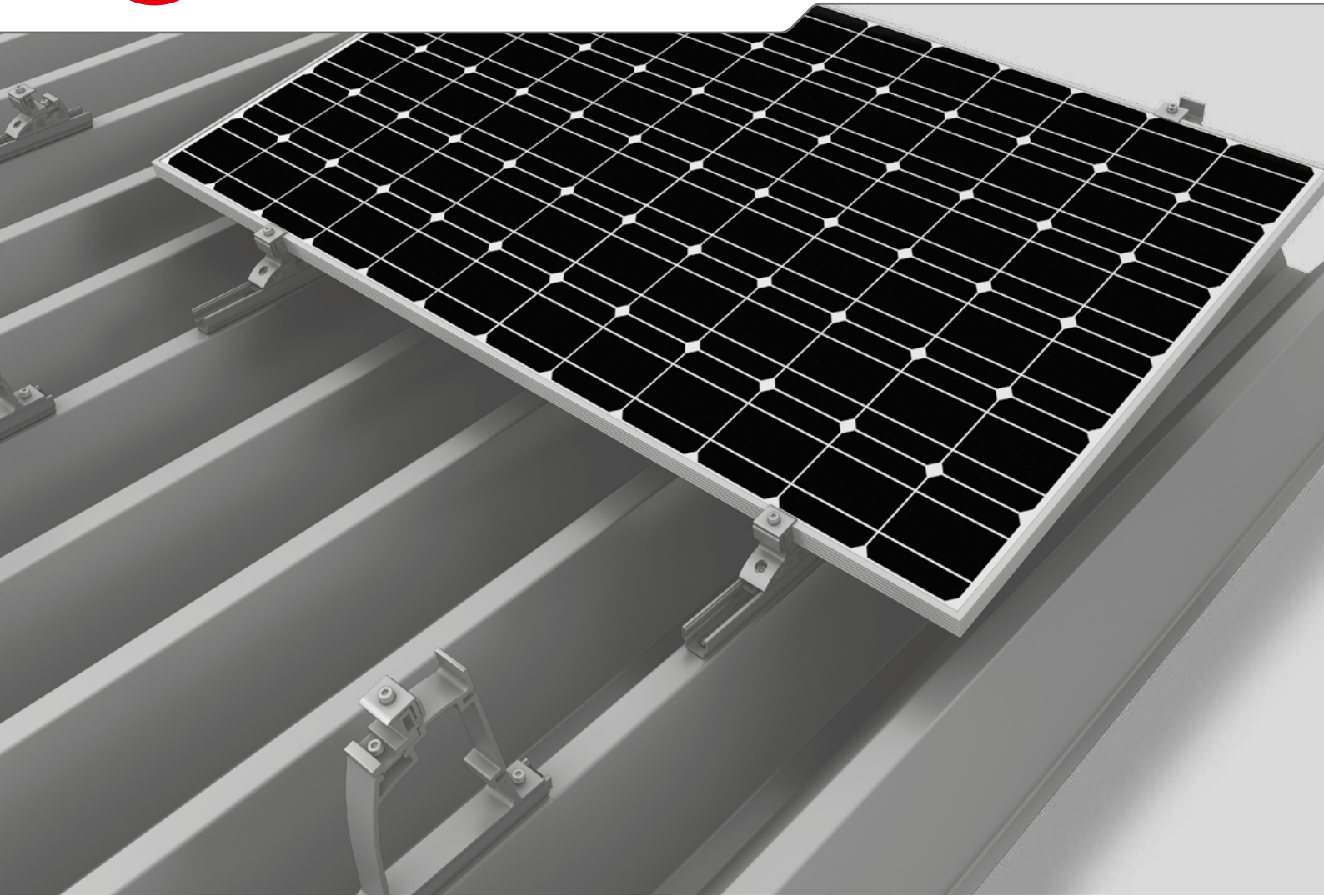




# S-Dome Small System



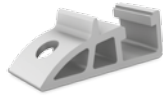
- ▶ For a roof inclination of up to 15° on trapezoidal sheet metal
- ▶ Economical in terms of materials and transportation; clever connections and strong holding power
- ▶ The perfect combination of the all-round MultiRail component and load-optimised, slim elevations



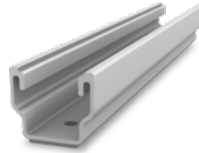
## S-DOME SMALL COMPONENTS



**Dome S1000 Small**  
Narrow elevation module support element

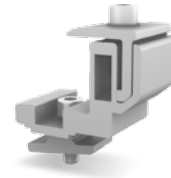


**Dome SD Small**  
Narrow module support element



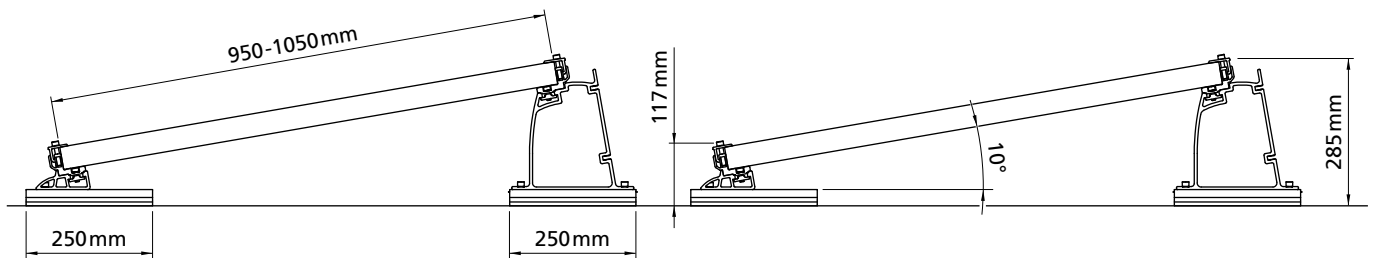
**MultiRail 25 or 25/3**

- ▶ Length 250 mm
- ▶ 25: For roofs with an inclination  $< 15^\circ$
- ▶ 25/3: With three bore-holes for roofs with  $15^\circ$  inclination



**FlexClamp Small**

- ▶ Module clamp specifically for S-Dome Small
- ▶ Height adjustable
- ▶ For clamping on the long side of module



## TECHNICAL DATA

| S-Dome Small                         |   |
|--------------------------------------|---|
| <b>Scope of application</b>          | Flat or pitched roofs $\leq 15^\circ$ with trapezoidal sheet metal roofing  |
| <b>Fastening type / roof fixture</b> | Attached with drilling screws in trapezoidal sheets, parallel to raised crests  |
| <b>Requirements</b>                  | <ul style="list-style-type: none"> <li>▶ Sheet thickness for aluminium/steel: min. 0.5 mm</li> <li>▶ Tensile strength for aluminium: <math>165 \text{ N/mm}^2</math></li> <li>▶ Tensile strength for steel: according to approval min. S235 in acc. w/ DIN EN 10025-1</li> <li>▶ Crest width: min. 22 mm</li> <li>▶ Crest spacing: independent of crest distance</li> </ul> |
| <b>Technical specifications</b>      | Thermal separation after a max. of 13.5 m: min. 30 mm to max. 150 mm  |
| <b>Inclination angle</b>             | $10^\circ$  |
| <b>Material</b>                      | <ul style="list-style-type: none"> <li>▶ Mounting rails, Dome SD Small, Dome S1000 Small, FlexClamp Small: Aluminium (EN AW-6063 T66/ EN AW-6082 T6); EPDM</li> <li>▶ Small parts: Stainless steel (1.4301) A2</li> </ul>   |