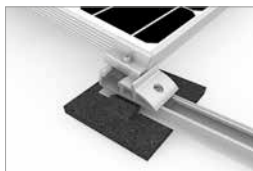


Mounting systems for solar technology



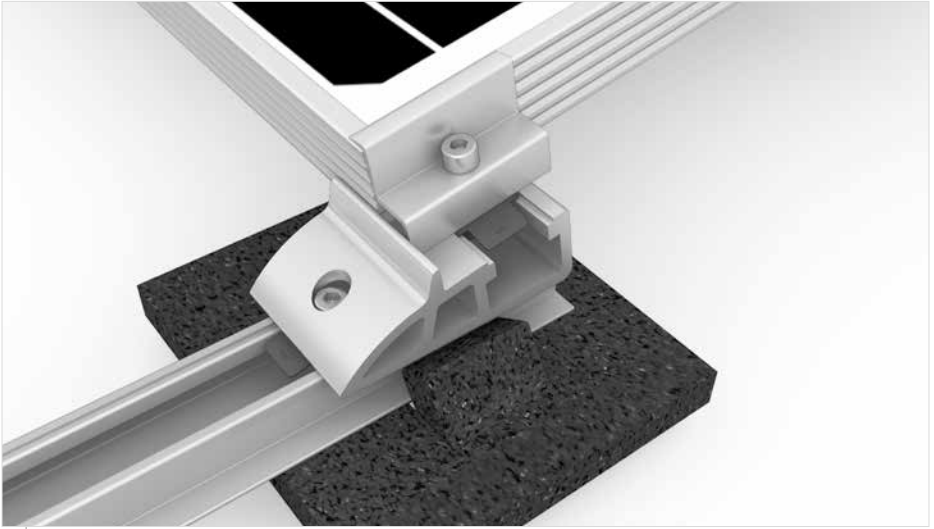
K2 SYSTEMS
FLAT ROOF SYSTEMS
S-DOME 2.0 SYSTEM

S-DOME 2.0 SYSTEM

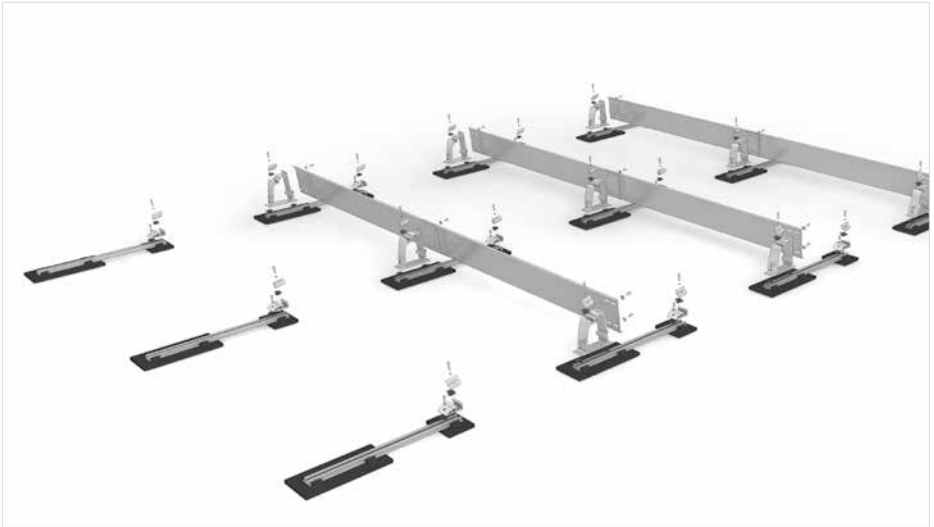
- Ideal for roofs with low ballast potential and with or without a parapet
- Very attractive price-performance ratio and logistic advantages thanks to short rail sections and sleek Dome design.
- Very easy to install, because of just a few simple K2 Dome system components with optimum accessibility
- 10° elevation angle
- Aerodynamically tested in a wind tunnel by leading structure aerodynamicists
- Static proven solution using the K2 Base Planning Software



Technical data	
Field of application	Flat roof to 5°
Roofing	Foil and bitumen roof
PV modules	Module attachment by corner clamping, observing module manufacturer recommendations
Module orientation	Horizontal
System orientation	South-east to south-west
Material	Aluminium (EN AW-6063 T66)
Connecting elements	Stainless steel screw A2-70
Weight/m ² module surface	without module, without ballast approx. 2.8kg
Roof connection	Laying with potential ballasting, no roof penetration
Static principles	Calculation principles in accordance with Eurocode 9 - dimensioning and construction of aluminium structures using wind tunnel tests
Load assumption in accordance with	DIN EN 1991 (Eurocode 1)
System components	K2 SpeedRail, K2 S-Dome 1000 2.0, K2 Dome SD 2.0, MK2, Endclamp Set, XS Middleclamp Set, K2 (Short) Porter, Windbreaker, Building protection mat, bolt with serrated under head



Detailed illustration - S-Dome 2.0 System



Detailed illustration - S-Dome 2.0 System



SERVICE HOTLINE
+49 (0)7159 42059-0
www.k2-systems.com

Produktblatt 5-Dome 2.0 System | G83 | 0116 | Subject to change
Product illustrations are exemplary and may differ from the original.

Please refer to
<http://www.k2-systems.uk.com/downloads/certificates.html>
to download our quality and product certificates.