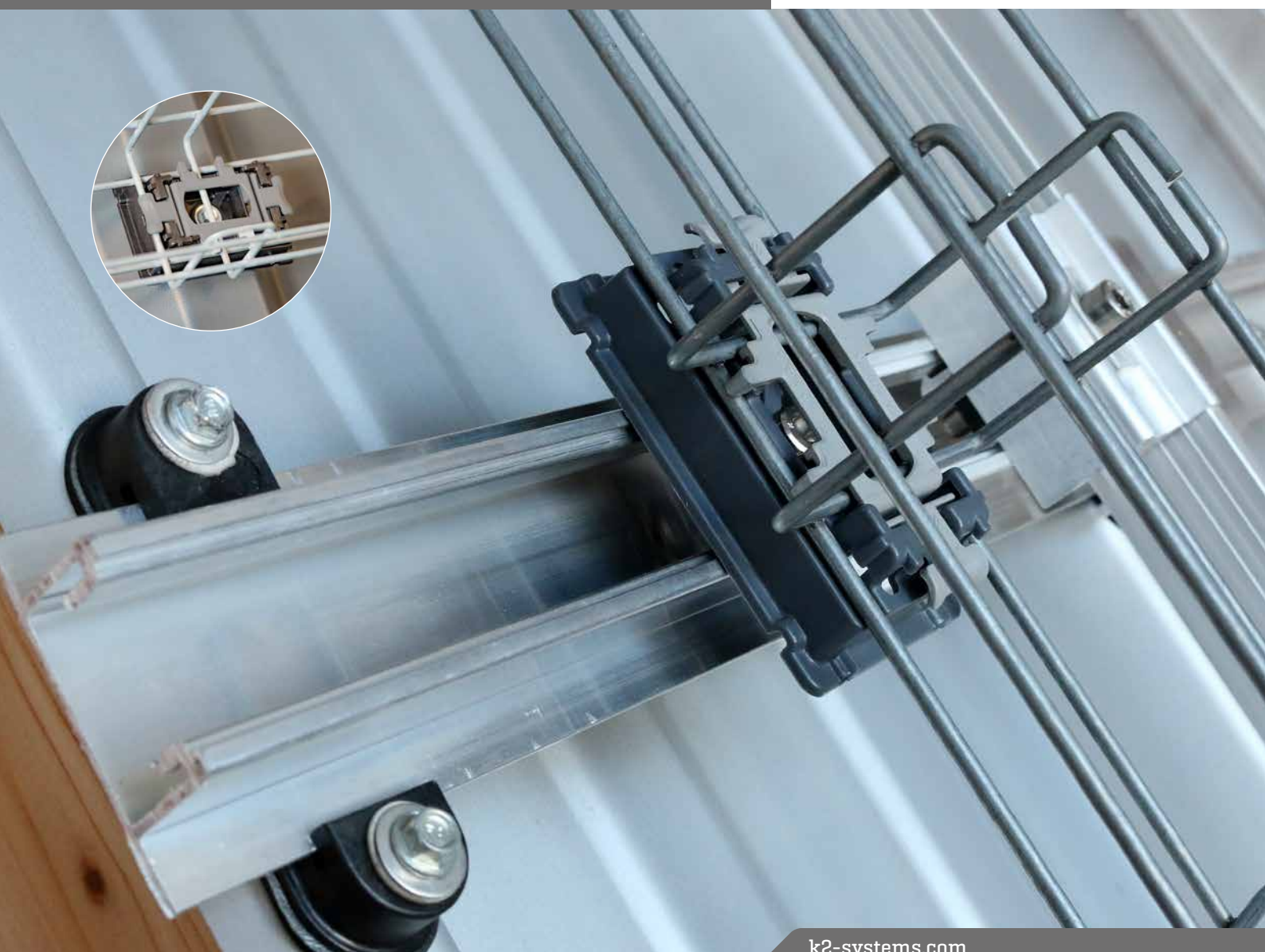


We support PV systems



# PVX Minimount for rails and trapezoidal sheet

## ASSEMBLY INSTRUCTIONS



# Content

▶ Tools overview	3
▶ Assembly on K2 mounting rails	4
· Components	4
· Assembly	4
▶ Assembly directly on trapezoidal sheet	6
· Components	6
· Assembly	6

## Quality tested – several certifications

K2 Systems stands for secure connections, highest quality and precision. Our customers and business partners have known that for a long time. Independent institutes have tested, confirmed and certified our capabilities and components.

Please find our quality and product certificates under:  
[k2-systems.com/en/technical-information](https://k2-systems.com/en/technical-information)

# Tools overview



6 mm



8 mm



6 - 35 Nm  
[4.5 - 22.2 lb-ft]



6 mm



8 mm

## Digital Toolbox



**Do you already know our digital services?** Use our K2 DocuApp now and record the first important data directly at the customer or project site. Simply import the data into our online planning software K2 Base. Here you can plan your project easily, safely and quickly. You receive a detailed project report with assembly plan and static report. The K2+ interface enables seamless project data transfer to the planning tools of other manufacturers. With the K2 DocuApp, project documentation is done quickly and easily - without annoying paperwork.

### Get started now and register:

[base.k2-systems.com](https://base.k2-systems.com) →

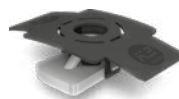
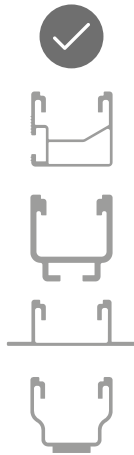
[docuapp.k2-systems.com](https://docuapp.k2-systems.com) →

# Assembly on K2 mounting rails

## Components



2003387  
**PVX Minimount Rail**  
suitable for SingleRail, SolidRail  
and SpeedRail [Dome 6]



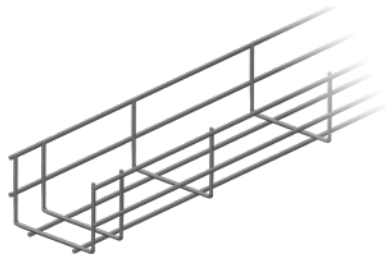
1001643  
**MK2 slot nut**



1000121  
**Washer**



2001729  
**Bolt with serrated  
under head M8x20**



2004054  
**Performa Mesh Tray**  
70x100x3000 mm

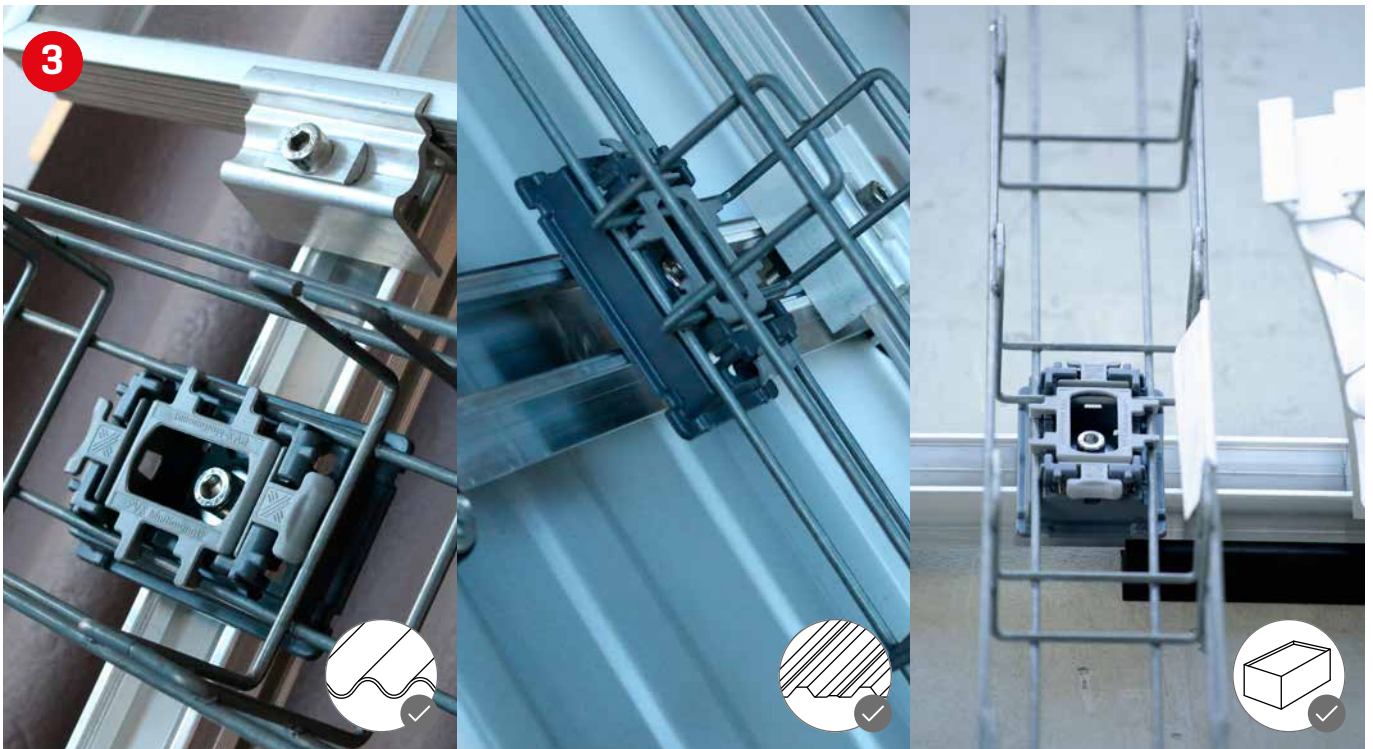


2004055  
**Performa Mesh Tray  
Connector**

## Assembly







# Assembly directly on trapezoidal sheet

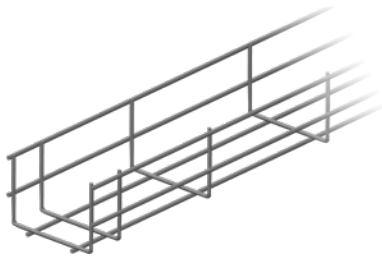
## Components



2003386  
**PVX Minimount Trapezoidal**  
incl. bottom sealing



1005193  
**Thread-forming tapping screw**  
incl. sealing washer



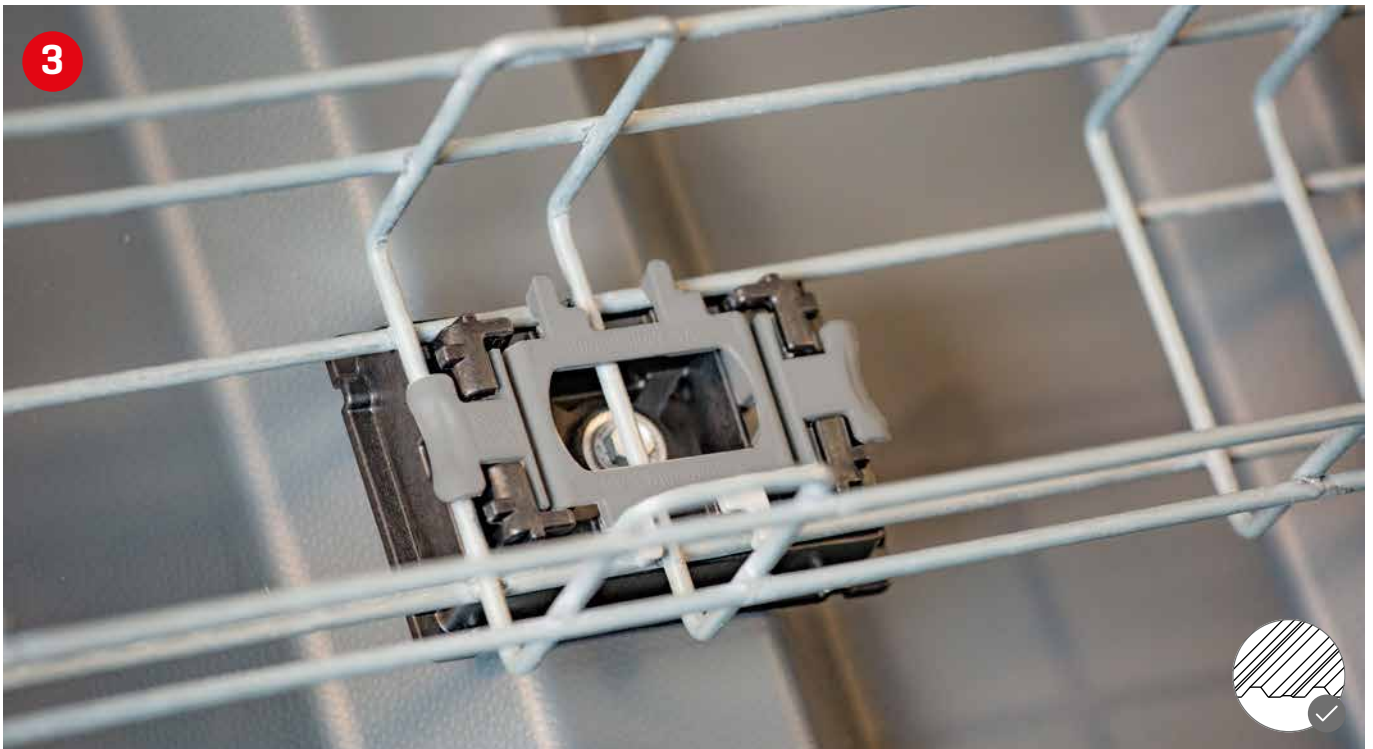
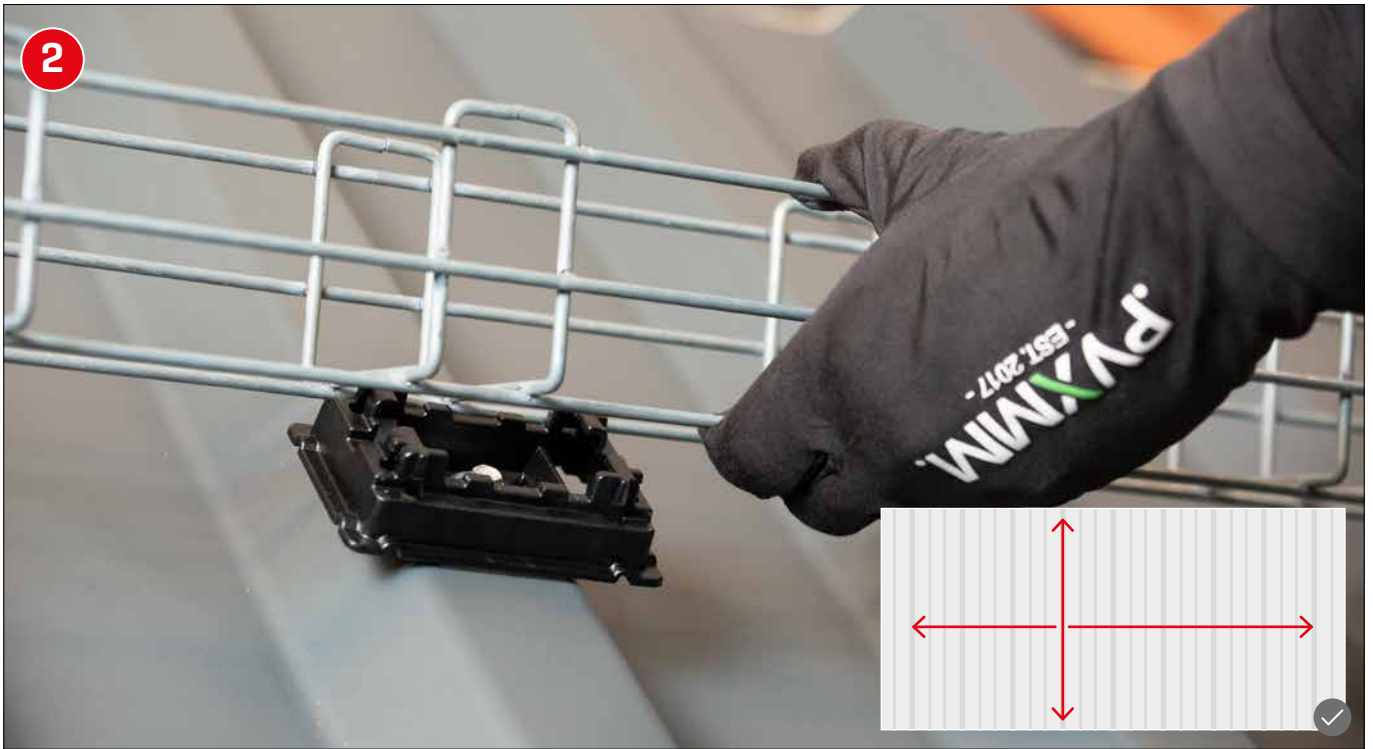
2004054  
**Performa Mesh Tray**  
70 × 100 × 3000 mm



2004055  
**Performa Mesh Tray**  
Connector

## Assembly





# We support PV systems



## Thank you for choosing a K2 mounting system.

Systems from K2 Systems are quick and easy to install. We hope these instructions have helped. Please contact us with any questions or suggestions for improvement.

Our contact data:

▶ [k2-systems.com/en/contact](https://k2-systems.com/en/contact)

▶ **Service Hotline: +49 [0]7159 42059-0**

German law shall apply excluding the UN Convention on CISG. Place of venue is Stuttgart.

Our General Terms of Business apply. Please refer:  
[k2-systems.com](https://k2-systems.com)

**K2 Systems GmbH**

Industriestraße 18  
71272 Renningen  
Germany

+49 [0] 7159 - 42059 - 0  
[info@k2-systems.com](mailto:info@k2-systems.com)  
[www.k2-systems.com](https://www.k2-systems.com)