

Quick Installation Guide

AC Charger

AC011E-01



- The contents of the document will be periodically updated or revised due to the product development. It is probably that there are changes of document in the subsequent edition. Under no circumstances can this document replace the user manual and the safety instructions on the product.
- Please read the user manual and relevant standards and specifications carefully before performing any operation. You can get the information by logging in Sungrow support platform via <http://support.sungrowpower.com/> or scanning the QR code on the side of the product or on the back cover of the quick installation instruction.
- All operations shall only be performed by professional personnel. Professional personnel must be trained specially, read this instruction thoroughly, master the safety instructions related to operation and be familiar with the local standards and safety regulations of electrical system.
- Before installing the equipment, check whether the goods are complete and consistent with the order, and whether there is obvious damage according to the packing List. Contact the shipping company or SUNGROW directly in case of any damage or incompleteness.
- Cables used for the charger must be intact and well insulated. Use insulation tools and wear personal protective equipment.
- Violation of any of the above requirements may cause casualties or equipment damage.

Safety Statement

Failure to comply with the requirements of this document and the user manual may cause casualties or equipment damage, and Sungrow shall not assume any liability.

⚠ DANGER

High voltages are present during operation and could cause electrical shock, resulting in death, serious personal injury, or property damage.
 Non-professional personnel shall not disassemble the components.

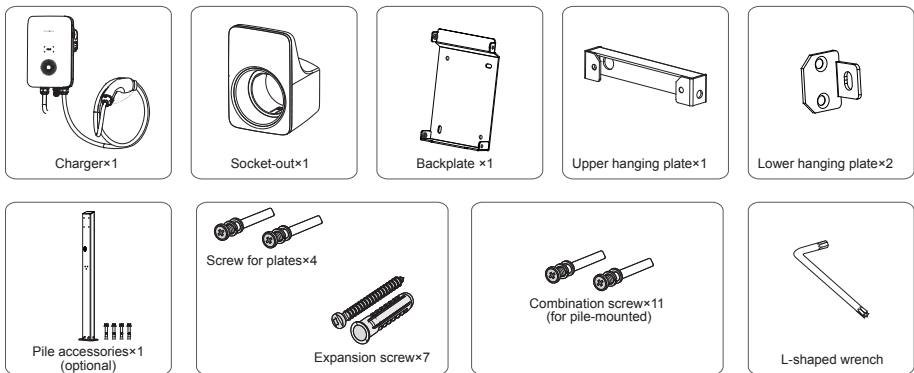
⚠ CAUTION

Keep the charger away from flammable and explosive substances. Store it in a dry, clean, and well-ventilated place, free from harmful gases. Do not store it near the corrosive objects.

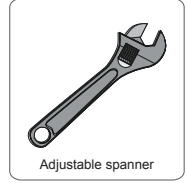
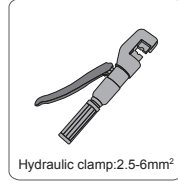
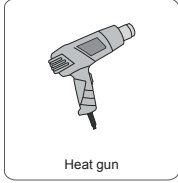
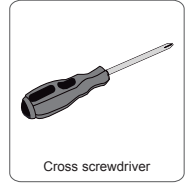
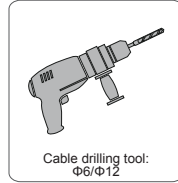
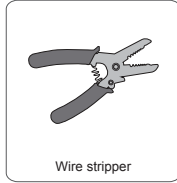
⚠ NOTICE

- During transport, the charger shall be securely packed and marked in the loading direction in a wooden box, and the charger shall not be stored upside down.
- During transport, tighten the equipment to avoid violent shaking and bumps that damage the package.
- After the arrival of goods, check for transport damage and, if any, contact the shipping company or us.
- Check if the devices inside the package are the same as that of the delivery list.

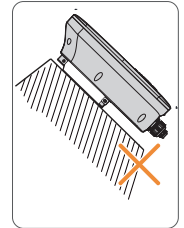
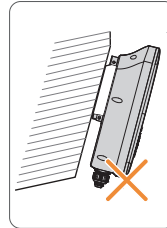
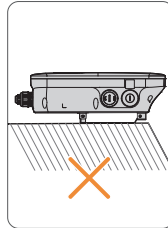
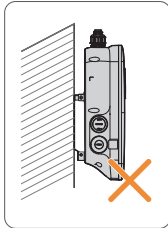
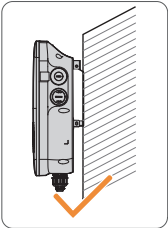
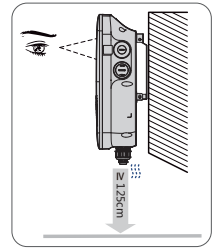
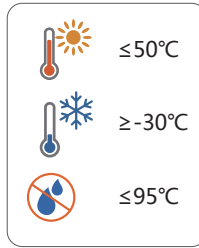
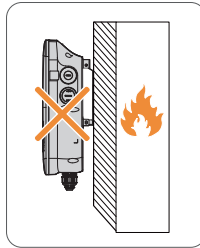
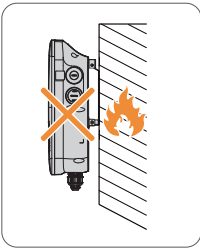
Scope of delivery:



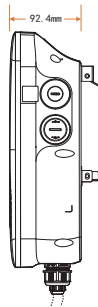
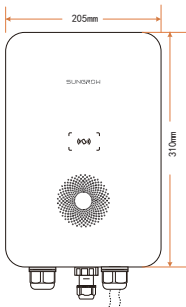
Tools:



Mounting place



Dimensions and weight



Name

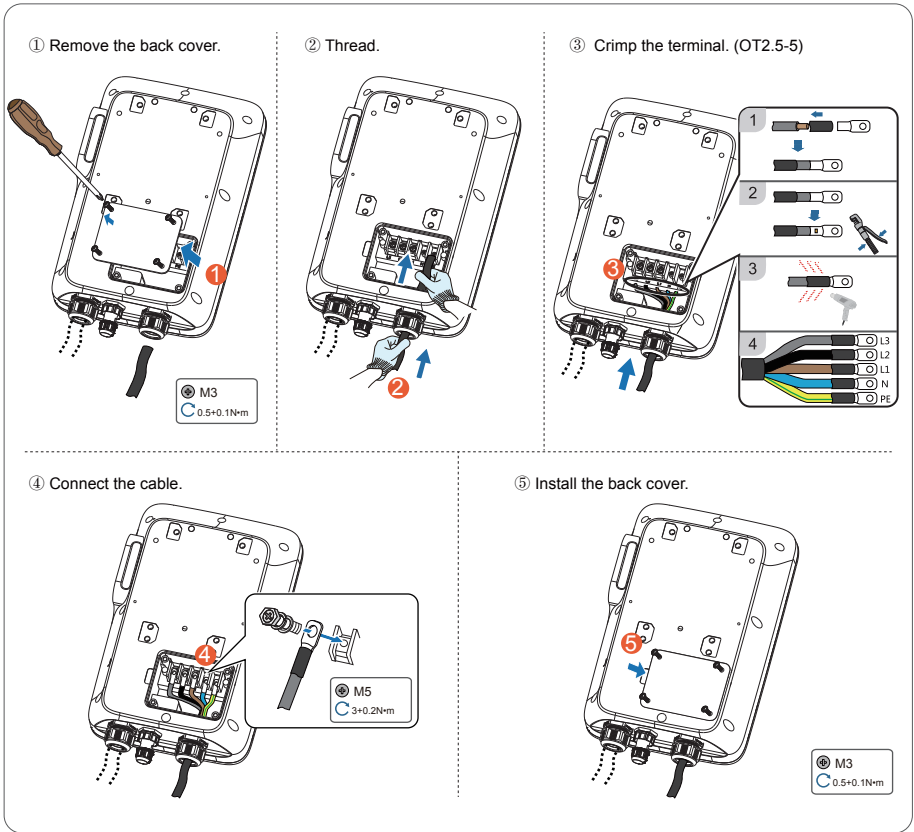
Weight

AC011E-01

3.8kg (with plugs)

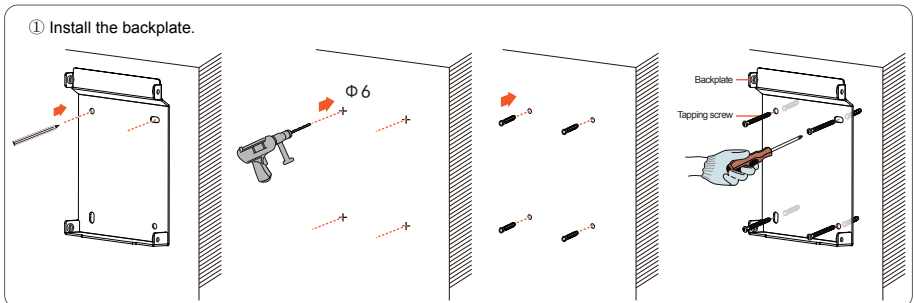
Cable connection

Note: cable shall be connected before the charger is installed. Cable cross section: $5 \times 2.5 \text{mm}^2$



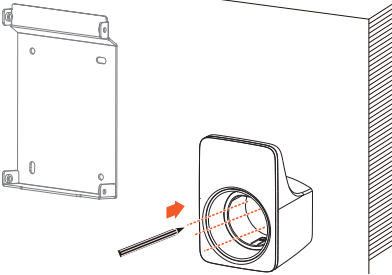
Wall-mounted charger installation

Before drilling, avoid the water and electricity wiring in the wall to prevent hazards. The drill size is $\Phi 6\text{mm}$ and the drilling depth is about 45mm. The bearing capacity of the installation carrier shall be at least 4.5 times that of the charger!

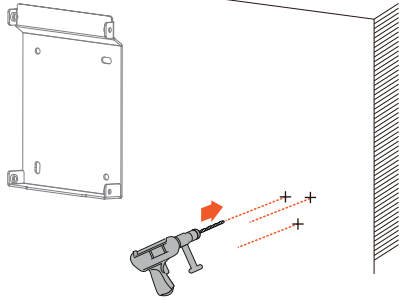


② Install the socket-out .(It is recommended that the socket-out be installed at the lower right side of the charger, with a linear distance of about 20cm from the charger. The actual situation on site shall prevail.)

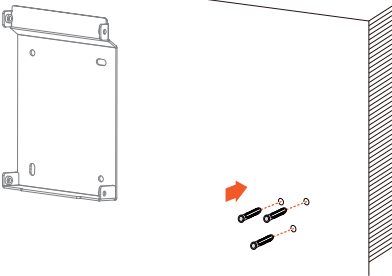
1



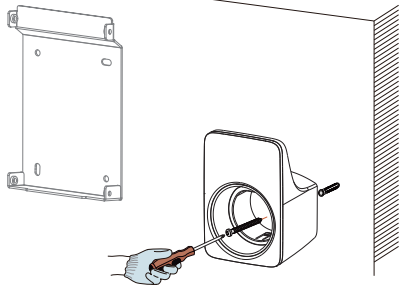
2



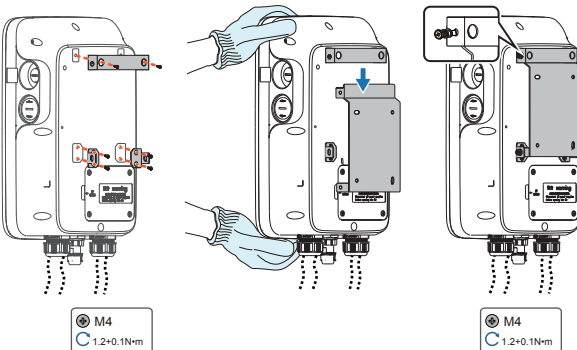
3



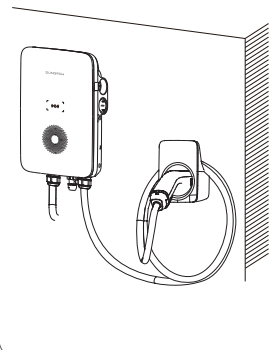
4



③ Charger installation.



Wall-mounted installation effect diagram.



Inspection before commissioning

No.	Item	Judgment	
		Yes	No
1	The installation place is convenient for operation and maintenance.	<input type="checkbox"/>	<input type="checkbox"/>
2	The charger is installed securely.	<input type="checkbox"/>	<input type="checkbox"/>
3	With sufficient cooling space.	<input type="checkbox"/>	<input type="checkbox"/>
4	Cable is connected correctly and firmly.	<input type="checkbox"/>	<input type="checkbox"/>
5	Cables are routed safely and protected against mechanical damage.	<input type="checkbox"/>	<input type="checkbox"/>

Commissioning

Step 1 Confirm that all inspected items meet the requirements before commissioning;

Step 2 Close the the cable inlet leakage protection circuit breaker;

Step 3 Power on the charger: about one minute of power-on self-test time;

Step 4 After power-on self-test, observe the status of the indicators.

The status description of the LED indicators are shown in the table below.

Charger status	Indicator
Standby	Blue indicator flashes slowly, on for 1s and off for 4s; circulating
Charging (S2 is closed and current is normal)	Blue indicator breathes, on for 1s and off for 1s; circulating
Charging stops	Blue indicator is steady on
Detecting plug	Blue indicator flashes quickly, on for 0.5s and off for 0.5s; circulating
Ground cable and live cable connected reversely	Red indicator is steady on
Power-on self-test	Blue indicator is on for 1s and red indicator is on for 1s
Charger software upgrading	Blue indicator flashes quickly



More information in the QR code or
at <http://support.sungrowpower.com/>