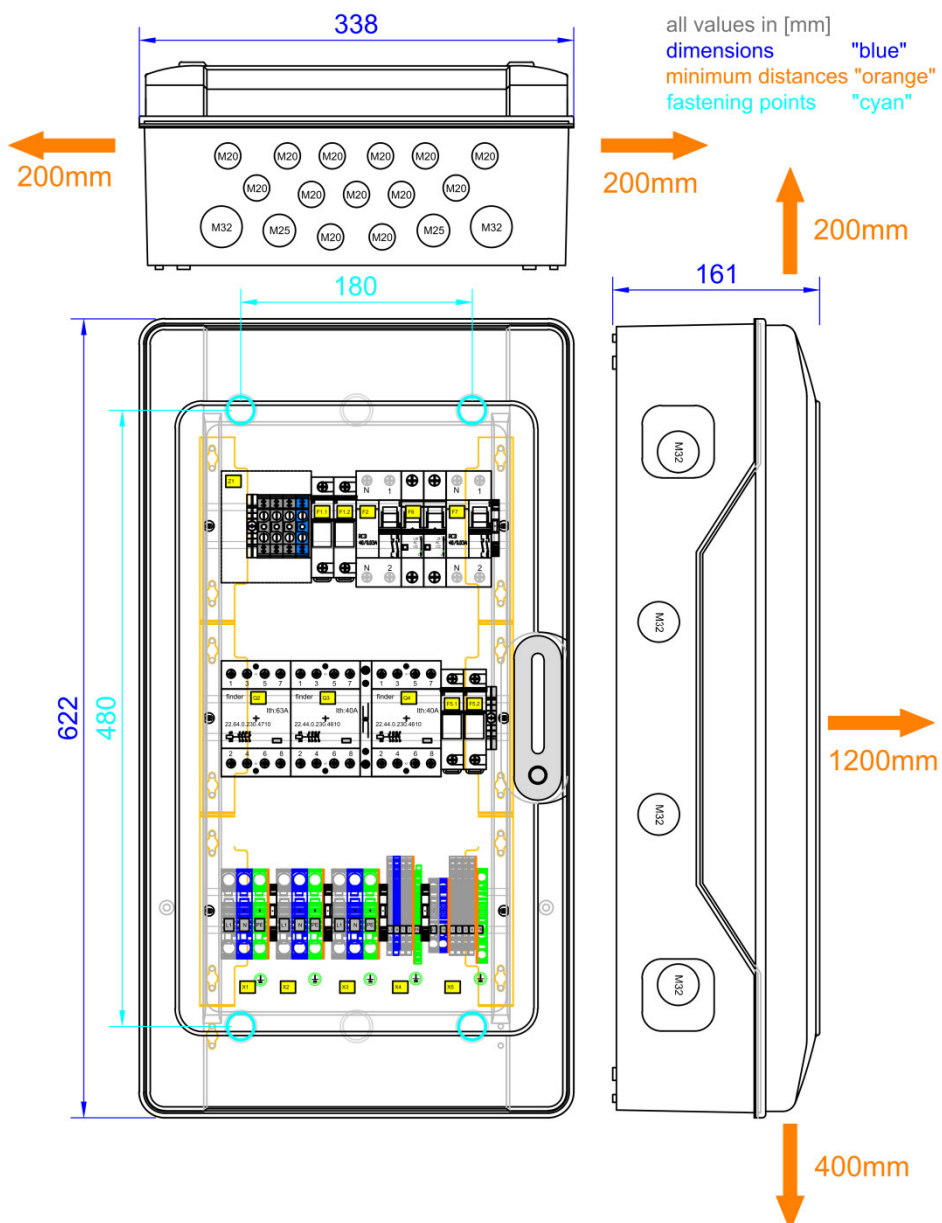


# DATA SHEET

## 1PH-Battery-Backup-Distribution for 1x Sunny Island French/Southern European version

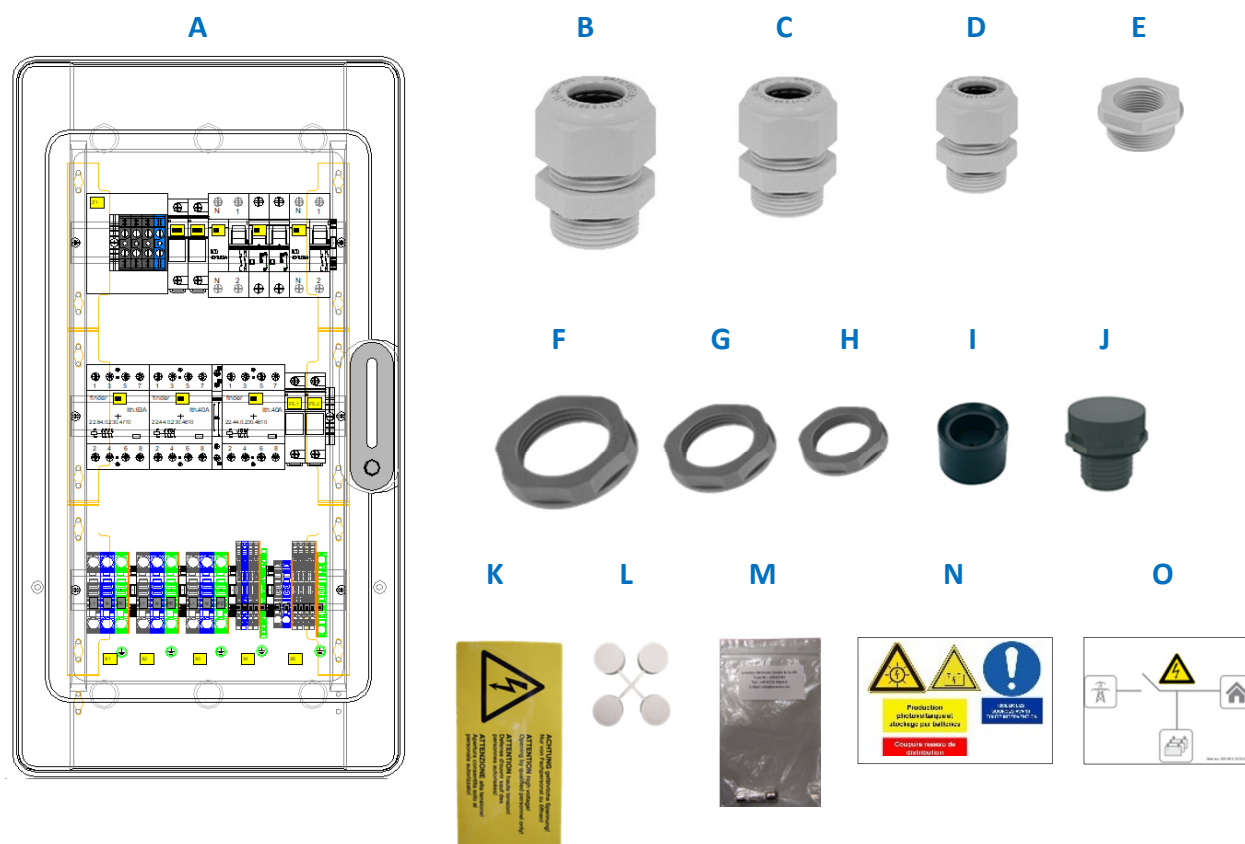
enwitec-order-number	10013676
Customer-article-number	
Type designation	Battery-Backup-Distribution 1PH - <b>prepared for retrofitting</b> SMA - Energy Meter/Home Manager 2.0
Match code	1PH_EPC_SMA.SI_BBDAP_12KW_1PH_PREP_FR_1.0
Application	Backup power - SMA "Flexible Storage System"
Battery-inverter	Sunny Island 4.4M-12 from firmware-version 1.00.xx.R Sunny Island 6.0H-12 from firmware-version 1.00.xx.R Sunny Island 8.0H-12 from firmware-version 1.00.xx.R
Grid structure	<b>TT or TN-S system - Single Phase</b> <b>Sunny Island feed in: 1 phase! (=1 x Sunny Island)</b>



# DATA SHEET

1PH-Battery-Backup-Distribution for 1x Sunny Island French/Southern European version

## SCOPE OF DELIVERY

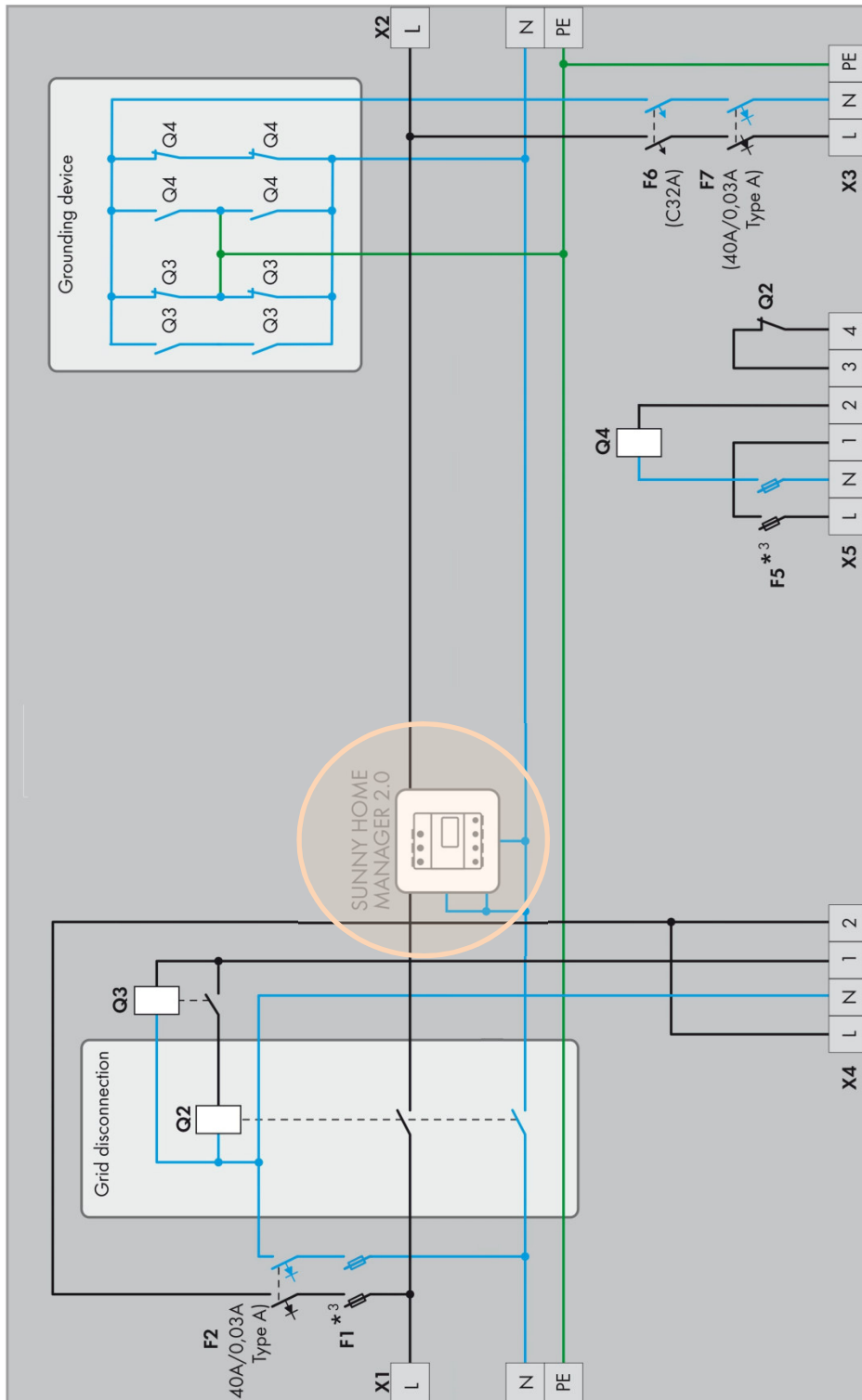


position	number	component
A	1	Battery Backup Distribution 10013676
B	3	Cable gland M32 x 1,5 (clamping range $\varnothing$ 13 – 21mm)
C	2	Cable gland M25 x 1,5 (clamping range $\varnothing$ 9 – 17mm)
D	5	Cable gland M20 x 1,5 (clamping range $\varnothing$ 6 – 13mm)
E	1	Reduction adaptor -M20 to M12- (equalising membrane)
F	3	Locknut M32
G	2	Locknut M25
H	6	Locknut M20
I	1	Special sealing insert (CAT 5e cable „RJ45 Plug“ -M25-)
J	1	Equalising membrane
K	1	Warning-label “high voltage”
L	4	Cover caps for fastening screws
M	3	Ferrule-fuse 10x38mm (either Littelfuse #KLKD-1A; Fast Acting) or Bussmann #KTK-1A; Fast Acting) 4 pcs. inserted (Fuse-holders); 2 pc. as a spare-part
N	1	Warning label C15-712
O	1	Label - image "with reference to an island mode system ability"

# DATA SHEET

1PH-Battery-Backup-Distribution for 1x Sunny Island French/Southern European version

## CIRCUIT DIAGRAM



\*<sup>3</sup> Requirements for thermal fuse used: 1 A, nominal cold resistance of at least 0.2 Ω and melting integral max. 1A2s.

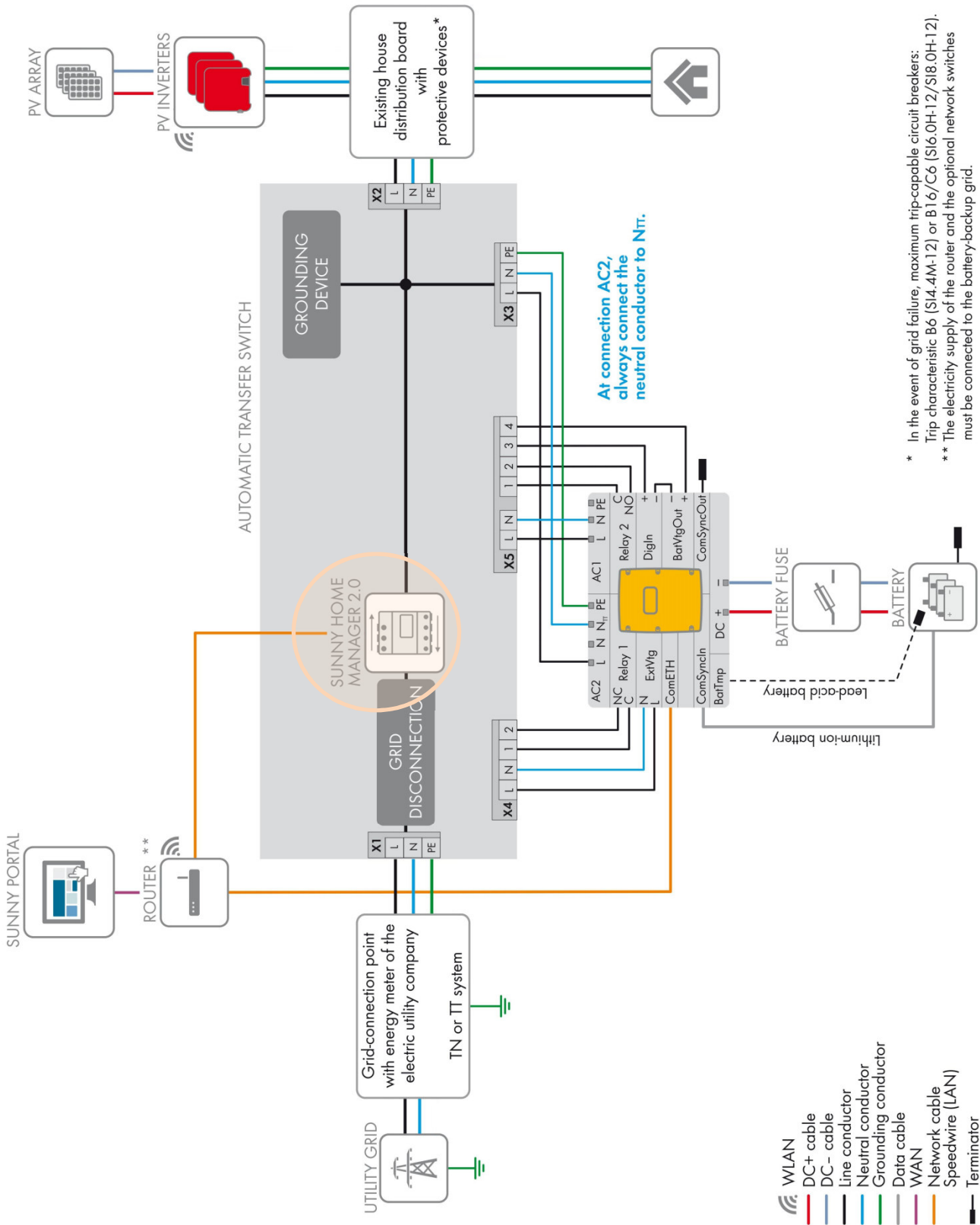


**prepared for retrofitting: SMA - Energy Meter/Home Manager 2.0**

# DATA SHEET

## 1PH-Battery-Backup-Distribution for 1x Sunny Island French/Southern European version

### CIRCUITRY OVERVIEW



**prepared for retrofitting: SMA - Energy Meter/Home Manager 2.0**

# DATA SHEET

## 1PH-Battery-Backup-Distribution for 1x Sunny Island French/Southern European version

### TECHNICAL DATA

Rated operating voltage AC	[V]	Single Phase-230
Rated insulation voltage	[V]	400
Operating frequency	[Hz]	50/60+/-5%
Max. prospective short circuit current	[kA]	10
Permitted grid structure		TT / TN-S
Max. value of pre-fuses	[A]	63 A
Max. thermal power	[kW]	12
Standby-loss	[W]	ca. 11

#### Circuit breakers and fuses

F1.1 Ferrule fuse 10x38mm		1A; fast acting
F1.2 Ferrule fuse 10x38mm		1A; fast acting
F2 RCD (residual current protective device)		Type A /40A-0,03A
F5.1 Ferrule fuse 10x38mm		1A; fast acting
F5.2 Ferrule fuse 10x38mm		1A; fast acting
F6 MCB (circuit breaker - "C"-characteristic; 2pole)		32A
F7 RCD (residual current protective device)		Type A/40A-0,03A

#### Contactors

IEC/EN 61095; IEC/EN60947-1; IEC 60947-5-1		
Q2 „grid disconnection“	AC1 [A]	63
Q3 „grounding device I“	AC1 [A]	40
Q4 „grounding device II“	AC1 [A]	40
Control voltage		230V AC/DC
Hum-free		yes

#### Connections/terminals (spring-loaded terminals)

Terminal block	Wire type	Cross section [mm <sup>2</sup> ] max.	Stripping length [mm]	Ferrule
X1/X2/X3	solid	16	18-20	-
	stranded	25		-
	stranded	16		yes
X4	solid	2,5	8-9	-
	stranded	2,5		-
	stranded	2,5		yes
X5 (L1/N/PE)	solid	10	13-15	-
	stranded	10		-
	stranded	6		yes
X5 (1/2/3/4)	solid	2,5	8-9	-
	stranded	2,5		-
	stranded	2,5		yes

#### Cable glands

Terminal block	Size (metrical)	Clamping range [mm]
X1	M32	13-21
X1 PE	M20	6-13
X2	M32	13-21
X3	M32	13-21
X4	M20	6-13
X5 „L1/N/PE“	M25	9-17
X5 „1/2/3/4“	M20	6-13

picture may differ from original



Observe the installation instructions!

#### General data

Dimensions (WxHxD)	[mm]	338x622x161
Weight	[kg]	10,5
Operating temperature range	[°C]	-25..+40
Temperature - transport/storage	[°C]	-25..+55
Temporary max. 24 hours	[°C]	70
Humidity-condensing allowed	•/-	-
Humidity – permitted range [%]		5 ... 95
max. altitude above sea level	[m]	2000
Protection class IP (EN 60529)		65
Outdoor-application permitted	•/-	-
Installation type		Indoor area
Protection against electric shock (EN 61140)		II
Case material		Polycarbonate
RoHS-conformity (2011/65/EU)		•
Colour of case		similar RAL7046
Way of mounting		wall mounting
cover		transparent
Locking system		without tool

#### Relevant standards

Switching devices	EN 61439-1 EN 61439-2 EN 61439-3
„distribution boards – operated by ordinary people“ (DBO)	EN 61439-3
French - national standards	UTE C15-712 NF C15-100

#### Miscellaneous

Customer tariff number	85371098
------------------------	----------